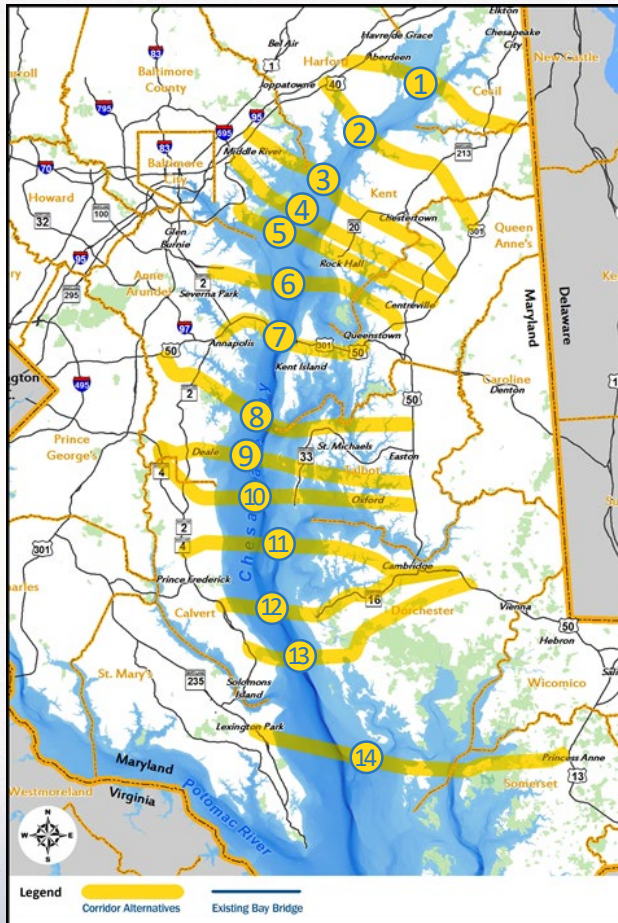


Development of Corridor Alternatives

The Tier 1 Corridor Alternatives development process includes a broad geographic area to identify a reasonable range of corridors. The MDTA identified 14 corridor alternatives that were screened to narrow the range of alternatives.



The 14 identified corridor alternatives:

- are approximately two miles wide
- are generally perpendicular to the shorelines
- generally connect to peninsulas or long stretches of Chesapeake Bay shoreline
- avoid mouths of rivers or other large bodies of water
- generally avoid towns and developed areas where practical
- extend from a freeway or major state highway on the Western Shore to US 301, US 50, or US 13 on the Eastern Shore