

## Appendix A. Section 106 Methodology



## Cultural Resources Methodology



### **Introduction**

The purpose of the Chesapeake Bay Crossing Study: Tier 1 NEPA (Bay Crossing Study) is to consider corridors for providing additional transportation capacity and access across the Chesapeake Bay to improve mobility, travel reliability and safety at the existing Bay Bridge. The Federal Highway Administration (FHWA) and Maryland Transportation Authority (MDTA) are preparing a Tier 1 Environmental Impact Statement (EIS) to satisfy the requirements of the National Environmental Policy Act (NEPA). The Bay Crossing Study will evaluate potential new corridor alternatives including an assessment of existing and potentially expanded transportation infrastructure needed to support additional capacity; improve travel times; and accommodate maintenance activities, while considering financial viability and environmental responsibility.

The preliminary study area covers the entire length of the Chesapeake Bay in Maryland and extends east and west sufficiently to connect to the existing state road network. This memorandum presents an overview of the Tier 1 methodology for complying with Section 106 of the National Historic Preservation Act of 1966, as amended (NHPA). The Section 106 review process includes identification of historic properties (any prehistoric or historic district, site, building, structure, landscape or object included in, or eligible for inclusion in the National Register of Historic Places [NRHP]), assessment of adverse effects, and resolution of adverse effects.

This methodology explains the process for addressing potential effects of the Tier 1 EIS alternatives on cultural resources and historic properties in the Bay Crossing Study. The methodology presents the regulatory context, identifies the participants, defines cultural resource activities to be performed during Tier 1, and defines a path forward during a potential Tier 2 study. The methodology identifies the data sources and tools that will be used to document existing conditions and analyze the potential for adverse effects. This methodology may be revised as the Bay Crossing Study progresses and new information becomes available. Portions of the methodology described herein may have been completed as of the latest revisions. The Cultural Resources Technical Report and other Bay Crossing Study NEPA documents will record the progress of the cultural resources study and Section 106 consultation.

### **Regulatory Context**

Section 106 of the NHPA and its implementing regulations at 36 CFR Part 800, requires federal agencies to take into account the effects of their undertakings on architectural and archaeological historic properties and afford the Advisory Council on Historic Preservation (ACHP) a reasonable opportunity to comment. The Bay Crossing Study involves coordination with multiple federal agencies, all of which are subject to the Section 106 requirements. The FHWA will serve as the Lead Federal Agency (LFA) for the Environmental Protection Agency, National

Marine Fisheries Service, United States Army Corps of Engineers and United States Coast Guard and fulfill the collective responsibilities for these federal agencies under the requirements of Section 106. Additional participants in the Bay Crossing Study Section 106 process include MDTA; the ACHP; the Maryland Historical Trust (MHT, which serves as the Maryland State Historic Preservation Officer [SHPO]); Federally Recognized Tribes; Local Governments; other Consulting Parties with a demonstrated interest; and the public.

The Section 106 process generally consists of four parts: initiation of the review process, identification of historic properties, assessment of adverse effects, and resolution of adverse effects. A memorandum of agreement (MOA) may be executed to document how any adverse effects would be resolved. A programmatic agreement (PA) may be used when the effects of an undertaking on historic properties cannot be fully determined prior to the approval of that undertaking.

### **Section 106 and the Bay Crossing Study**

First, FHWA and MDTA will initiate the Section 106 consultation process during Tier 1 NEPA, to provide a framework for coordination with the public and consulting parties. The Section 106 process will be initiated via letter from the FHWA to the Maryland Historical Trust (MHT). The initiation letter, will describe the undertaking and inform MHT of FHWA's intention to conduct phased identification of historic properties and propose the methodology for coordinating the Section 106 process with NEPA.

Section 106 regulations at 36 CFR §800.4(b)(2) allow for agencies to complete phased identification of historic properties for projects such as the Bay Crossing Study, in which large corridors or land areas are being considered as alternatives. The Section 106 regulations state that final identification and evaluation of historic properties may be deferred "if it is specifically provided for in... documents used by an agency official to comply with the National Environmental Policy Act pursuant to [36 CFR] §800.8."

FHWA will provide MHT with a preliminary list of consulting parties as an attachment to the initiation letter and seek assistance from MHT in identifying additional potential consulting parties. The initial list of potential consulting parties as they relate to the Bay Crossing Study (36 CFR §800.2(c) (3) and (5), and §800.3(f)) will be identified from an existing list maintained by the Maryland Department of Transportation State Highway Administration (MDOT SHA) Cultural Resources Division. For the purposes of the Bay Crossing Study, the FHWA and MDTA will supplement the list with state-recognized tribes and government agencies, organizations, associations and individuals with a demonstrated legal or economic interest in the undertaking and the preservation of historic properties, landscapes, and/or archaeological sites in the area of

potential effects (APE). MDTA will also seek to identify additional potential consulting parties through input at Bay Crossing Study public meetings. Consultation with Federally Recognized Tribes will be coordinated by FHWA.

After MHT has commented on the preliminary list of consulting parties, FHWA and MDTA will next invite the potential consulting parties to participate in Section 106 consultation. Consulting parties will be actively informed of and afforded an opportunity to comment on the Section 106 process. Consulting parties will additionally be invited to attend and submit comments at public meetings. Consultation will occur via email, the study website, and other electronic file transfer methods. In-person meetings with consulting parties may be held, if needed. Additional meetings to discuss cultural-resource-specific issues with MHT may be held as appropriate, with the goal of obtaining early and continual input on the direction and progress of the Section 106 process. The ACHP has expressed interest in participating in Section 106 consultation for Bay Crossing Study and will participate in meetings with MHT.

During Tier 1 of the Bay Crossing Study the approach to Section 106 will include the phased identification of historic properties. The Section 106 process will continue when a subsequent Tier 2 study is conducted on a specific crossing option. Section 106 consultation may conclude with an agreement document drafted during Tier 2.

### **NEPA and Section 106**

In accordance with 36 CFR §800.8, Section 106 consultation for the Bay Crossing Study will run concurrently with the NEPA process. As written in the Bay Crossing Study project Coordination Plan, a series of interagency coordination meetings will be held during the Tier 1 NEPA study, which will include discussion of cultural resource issues relevant to the Bay Crossing Study. The MHT will be invited to attend these coordination meetings. Information regarding cultural resources will be presented at Bay Crossing Study public involvement meetings to gather information about historic properties and obtain comments on potential effects to historic properties.

Pursuant to NEPA requirements during Tier 1, the FHWA and MDTA will assess a reasonable range of corridors, including the “No-Build” alternative. The FHWA and MDTA will then identify Corridor Alternatives Retained for Analysis (CARA). In accordance with 36 CFR §800.4(a)(1), FHWA and MDTA will then determine and document the area of potential effects (APE) based on the CARA. Next during Tier 1, cultural resources will be identified in each corridor and will be among the environmental screening criteria used to identify the CARA and the preferred corridor alternative. The CARA will be identified and studied in the Tier 1 Draft Environmental Impact



Statement (DEIS). An MDTA-recommended preferred corridor alternative may also be identified in the Tier 1 DEIS.

Section 106 decisions made during Tier 1 will be recorded in the Tier 1 Final Environmental Impact Statement/Record of Decision (FEIS/ROD). Recorded commitments would include the deferral of historic properties identification and the continuation of the Section 106 process during Tier 2. The FEIS/ROD would also document Section 106 activities completed in Tier 1 and specify that Section 106 consultation will continue only within the Preferred Corridor.

### **Research Methods & Technical Report**

FHWA and MDTA will conduct a phased approach to the identification and evaluation of effects to historic properties pursuant to 36 CFR §800.4(b)(2). During the Tier 1 NEPA study, FHWA and MDTA will begin the process of identifying architectural and archaeological resources within the APE. This includes historic properties, Maryland Inventory of Historic Properties (MIHP) resources, resources evaluated on full and short Determination of Eligibility (DOE) forms, and previously unevaluated resources constructed through 1980. Evaluation of historic significance of unevaluated resources would take place during a subsequent Tier 2 NEPA study.

Tier 1 of the Bay Crossing Study will include the development of corridor alternatives, which will consist of approximately two-mile wide corridors crossing the Chesapeake Bay and extending to logical termini at existing roadway infrastructure on either side of the Bay. These corridor alternatives will serve as the preliminary APE. The Bay Crossing Study will use readily-available, desktop-level data for identifying the presence of architectural and archaeological resources. Within these corridor alternatives, cultural resources will be identified, mapped, and described in a cultural resources technical report to be included within the Tier 1 EIS. To do this, the Bay Crossing Study will organize the data into a comprehensive database and a Geographic Information System layer as part of the comparison of corridor alternatives. No evaluation of historic significance will take place during the Tier 1 study.

As the Tier 1 EIS progresses, the FHWA and MDTA will identify Corridor Alternatives Retained for Detailed Analysis (CARA). The APE and the inventory of cultural resources will be refined to each of the CARA. While effects will not be determined for each corridor alternative as no specific route will be identified, the number and location of historic properties and National Historic Landmarks within each corridor alternative will be considered to inform the environmental analysis of the CARA.

Cultural resources data will be collected from readily available sources such as Medusa, which is Maryland's geographic information system (GIS) containing information on known architectural

and archaeological resources recorded in the MIHP and the NRHP. The National Park Service's (NPS) online resources will also be consulted to identify National Historic Landmarks (NHLs) within the corridor alternatives. An identified gap in this data set is the consistency for level of detail, currency, and coverage by county. For this reason, GIS analysis of Maryland State Department of Assessments and Taxation (SDAT) parcel data within each of the CARA will identify previously unevaluated architectural resources built through 1980. This analysis will inform the evaluation of the CARA and lay the groundwork for detailed identification and additional Section 106 activities during a potential Tier 2 study. Consulting parties will be asked to provide information about cultural resources that may not have been previously identified. Supplemental information that will be considered includes aerial photogrammetry, soil survey mapping, archival research, historical data and models from other local, state, and federal repositories. In some instances, field reconnaissance efforts such as windshield surveys will be conducted to augment understanding of the cultural resources environment.

The information collected will be sorted, mapped, analyzed, and evaluated in a technical report to compare the number of cultural resources and the potential for effects within the CARA. The report will be shared with the participants in the Section 106 process.

Section 106 and the phased identification process will continue when a Tier 2 study is conducted. Work would include survey and NRHP evaluation of cultural resources within the preferred corridor alternative, assessment of adverse effects, and resolution of any adverse effects.

### **Bay Crossing Study Section 106 Process Overview**

Tier 1 Section 106 will:

- Initiate Section 106 consultation
- Invite consulting parties to participate in Section 106 consultation
- Identify the APE
- Begin phased identification of historic properties and other cultural resources within the APE

Tier 2 Section 106 will:

- Continue phased identification of historic properties, including evaluation of historic significance
- Assess adverse effects
- Resolve any adverse effects

---

**Appendix B. Organizations Invited to Participate as Section 106 Consulting Parties**

**Bay Crossing Study**  
**List of Tribes, Organizations, and Government Agencies**  
**Invited to Participate in Section 106 Consultation**

<b>Organization</b>	<b>General Area of Interest</b>	<b>Consulting Party Participation Status</b>
Anne Arundel County Office of Environmental and Cultural Resources	Anne Arundel County	Participating
Annapolis Historic District Commission	Anne Arundel County	No Response Received
Deale Area Historical Society	Anne Arundel County	No Response Received
Four Rivers Heritage Area (aka ALTSCHA, Inc.)	Anne Arundel County	Participating
Historic Annapolis Foundation	Anne Arundel County	No Response Received
Historic London Town and Gardens	Anne Arundel County	No Response Received
Historic Owensville Civic Association	Anne Arundel County	No Response Received
North County Land Trust	Northern Anne Arundel County	No Response Received
Scenic Rivers Land Trust	Anne Arundel County	No Response Received
Baltimore City Commission on Historical and Architectural Preservation	Baltimore City	No Response Received
Baltimore National Heritage Area	Baltimore City	No Response Received
Baltimore Heritage	Baltimore Area; Statewide	Participating
Baltimore County Landmarks Preservation Commission	Baltimore County	No Response Received
Patapsco Heritage Greenway	Baltimore, Howard Counties	No Response Received
Preservation Alliance of Baltimore County	Baltimore County	No Response Received
Rockaway Beach Improvement Association, Inc.	Baltimore County	Participating
American Chestnut Land Trust	Calvert County	Participating
Calvert County Department of Community Planning and Building, Calvert County Historic District	Calvert County	No Response Received
Calvert County Historical Society	Calvert County	No Response Received
North Beach Department of Planning and Zoning	Calvert County	No Response Received
Southern Maryland Heritage Area	Calvert, Charles, St. Mary's Counties	No Response Received
Cecil County Planning Commission	Cecil County	Participating

<b>Organization</b>	<b>General Area of Interest</b>	<b>Consulting Party Participation Status</b>
Cecil Historical Trust	Cecil County	No Response Received
Charlestown Historic District Commission	Cecil County	No Response Received
Chesapeake City Historic District Commission	Cecil County	No Response Received
Eastern Shore Land Conservancy	Eastern Shore; Caroline, Cecil, Dorchester, Kent, Queen Anne's, Talbot Counties	Participating
Lower Susquehanna Heritage Greenway	Cecil, Harford Counties	Participating
Charles County Department of Planning and Growth Management	Charles County	Not Participating at this Time
Cambridge Historic Preservation Commission	Dorchester County	No Response Received
Dorchester County Planning and Zoning	Dorchester County	No Response Received
Heart of Chesapeake Country Heritage Area	Dorchester County	Participating
Absentee-Shawnee Tribe of Oklahoma	Federally Recognized Tribe	No Response Received
Delaware Nation	Federally Recognized Tribe	Participating
Delaware Tribe of Nations	Federally Recognized Tribe	No Response Received
Eastern Shawnee Tribe	Federally Recognized Tribe	No Response Received
Oneida Indian Nation	Federally Recognized Tribe	Not Participating at this Time
Onondaga Nation	Federally Recognized Tribe	No Response Received
Saint Regis Mohawk Tribe	Federally Recognized Tribe	No Response Received
Seneca-Cayuga Nation	Federally Recognized Tribe	No Response Received
Shawnee Tribe	Federally Recognized Tribe	No Response Received
Tuscarora Nation	Federally Recognized Tribe	No Response Received
Aberdeen Heritage Trust	Harford County	No Response Received
Aberdeen Proving Ground	Harford County	No Response Received
Harford County Department of Planning and Zoning	Harford County	No Response Received
Harford Land Trust	Harford County	No Response Received
Havre de Grace Historic District Commission	Harford County	No Response Received
Chestertown Historic District Commission	Kent County	No Response Received
Kent Conservation and Preservation Alliance	Kent County	Participating

<b>Organization</b>	<b>General Area of Interest</b>	<b>Consulting Party Participation Status</b>
The Historical Society of Kent County (formerly Kent County Heritage Trust)	Kent County	No Response Received
Kent County Department of Planning, Housing and Zoning	Kent County	Participating
Center for the Environment and Society Washington College	Kent County	Participating
Stories of the Chesapeake Heritage Area (aka Eastern Shore Heritage Inc.)	Kent, Caroline, Queen Anne's, and Talbot Counties	Participating
Kent Island Heritage Society	Queen Anne's County	No Response Received
Queen Anne's Conservation Association	Queen Anne's County	No Response Received
Queen Anne's County Department of Public Works	Queen Anne's County	Participating
Queen Anne's County Historical Society	Queen Anne's County	No Response Received
Patuxent Tidewater Land Trust	St. Mary's County	Participating
St. Mary's County Department of Land Use and Growth Management; St. Mary's County Historic Preservation Commission	St. Mary's County	No Response Received
Lower Eastern Shore Heritage Council	Somerset, Wicomico, Worcester Counties	Participating
Lower Shore Land Trust	Lower Eastern Shore; Somerset, Wicomico, Worcester Counties	Participating
Princess Anne Historic District Commission	Somerset County	No Response Received
Somerset County Historical Trust	Somerset County	No Response Received
Somerset County Planning and Zoning Commission	Somerset County	No Response Received
Preservation Maryland	Statewide	Participating
Maryland Commission on Indian Affairs	Statewide	No Response Received
Accohannock Indian Tribe, Inc.	State Recognized Tribe	No Response Received
Cedarville Band of Piscataway	State Recognized Tribe	No Response Received
Choptico Band of Piscataway	State Recognized Tribe	No Response Received
Piscataway Conoy Confederacy and Subtribes of Maryland	State Recognized Tribe	No Response Received
Piscataway Conoy Tribe of Maryland	State Recognized Tribe	No Response Received
Piscataway Indian Nation	State Recognized Tribe	No Response Received
Easton Historic District Commission	Talbot County	No Response Received

<b>Organization</b>	<b>General Area of Interest</b>	<b>Consulting Party Participation Status</b>
Oxford Historic District Commission	Talbot County	No Response Received
St. Michaels Historic District Commission	Talbot County	No Response Received
Talbot County Historic Preservation Commission	Talbot County	No Response Received
Talbot Historical Society	Talbot County	No Response Received
Tilghman Watermen's Museum	Talbot County	No Response Received
Preservation Trust of Wicomico	Wicomico County	No Response Received
Wicomico County Department of Planning and Zoning	Wicomico County	No Response Received
Chesapeake Bay Foundation	Chesapeake Bay	Participating
Chesapeake Bay Maritime Museum	Chesapeake Bay	No Response Received
Chesapeake Heritage Conservancy	Chesapeake Bay	No Response Received
Waterkeepers Chesapeake	Chesapeake Bay	No Response Received
Maryland Department of the Military	Maryland Department of the Military	No Response Received
Naval Air Station Patuxent River	Naval Air Station Patuxent River	No Response Received
United States Naval Academy	US Naval Academy	No Response Received

---

## Appendix C. Previously Conducted Terrestrial Archaeological Surveys

---



Corridor	Survey #	Authors	Year	Title	Acres
6	AN161	Neumann, Thomas W. and Martha R. Williams	1990	A Phase I Intensive Archaeological Investigation of the Windermere Estates Section 2 Project Area, Anne Arundel County, Maryland	7.07
6	AN227	Ebright, Carol A.	1992	Phase IB Archaeological Survey of a Drainage Outlet Location at Maryland Route 173 and Elizabeth Road, Anne Arundel County, Maryland	2.64
6	AN228	Goodwin, R. Christopher, Christopher R. Polglase, Pamela Crane, and Hugh Mcaloon	1993	Phase I Cultural Resource Investigations of the Lake Shore Athletic Complex, Anne Arundel County, Maryland	134.52
6	AN276	Ballweber, Hettie L.	1994	Phase I Archaeological Survey of the Chairs Property, Anne Arundel County, Maryland	15.95
6	AN285	Trask, Lance K., W. Patrick Giglio, and Michael B. Hornum	1994	Phase I Archaeological Survey of the Proposed Sagamore Run Subdivision, Anne Arundel County, Maryland	10.72
6	AN327	Ballweber, Hettie L.	1996	Phase I Archaeological Survey of the Preserve, Anne Arundel County, Maryland	8.81
6	AN393	Gibb, James G.	1999	Phase I Intensive Archaeological Survey of Maryland Route 177, Storm Water Management and Reforestation, Lake Shore, Anne Arundel County, Maryland. SHA Archaeological Report No. 222	4.4
6	AN405	Goodwin, R. Christopher et al.	1992	Phase I Archaeological Investigations of the Proposed Gallatin Woods Subdivision, Anne Arundel County, Maryland	5.64
6	AN443	Ebright, Carol A.	2002	Phase I Archaeological Survey for Catherine Avenue Over MD 100, Anne Arundel County, Maryland	3.77

Corridor	Survey #	Authors	Year	Title	Acres
6	AN618	Franz, Karl and Thomas Bodor	2011	Phase I Archaeological Survey of the McNamara Trust Property, Mountain Road, Pasadena, Anne Arundel County, Maryland.	44.12
6	AN622	Ward, Jeanne A.	2000	Phase I Survey of the Proposed Greensprings Development, Anne Arundel County, Maryland.	19.91
6	AN659	Tyler, Jason L. and Jeanne A. Ward	2013	A Phase I Archaeological Survey, The Buck Property, Anne Arundel County, Maryland.	6.16
6	DO51	Lowery, Darrin	1996	Archaeological Survey Work on Maryland's Eastern Shore During the 1996 Field Season.	79.43
6	KE45	Seidel, John L. and Darrin Lowery	2008	Interim Report on the Kent County Archaeological Survey & Predictive Model Testing, 2005-08.	80.75
6	QU34	Lowery, Darrin L.	1995	A Supplementary Archaeological Survey Of Interior Queen Anne's County, Maryland	53.16
6	QU35	Lowery, Darrin	1993	Archaeological Survey Of The Chester River, The Wye River, and The Prospect Bay Drainages, Queen Anne's County, Maryland	107.78
6	Pending #	Gibb Archaeological Consulting	2015	Phase I Intensive Archeological Survey of the proposed Hyde Park Estates Residential Subdivision	N/A
6	Pending #	The Ottery Group	N/A	Phase Archaeological Survey for the Proposed River Glen Subdivision (#08-017), 843 Woods Rd, Pasadena, Maryland	N/A
6	Pending #	The Ottery Group	2018	Phase I Archeological Survey of the Plyanski Property Pasadena Maryland.	N/A
7	AN185	Payne, Ted M.	1991	A Phase I Intensive Archaeological Survey for the Proposed Riverwatch Subdivision, Anne Arundel County, Maryland	18.76

# CULTURAL RESOURCES TECHNICAL REPORT

Corridor	Survey #	Authors	Year	Title	Acres
7	AN193	Ervin, Richard G.	1992	Archaeological Survey of the U.S. Route 50/301 Access Road, Anne Arundel County, Maryland	7.12
7	AN195	Boyd, Varna G., Joan W. Chase, and Richard J. Dent, Jr.	1992	Preliminary Archaeological Reconnaissance of the Alleco Property, Anne Arundel County, Maryland	1.03
7	AN226	Glumac, Petar D.	1993	Phase I Archaeological Survey US 50/301 Access Road at Whitehall Road, Anne Arundel County, Maryland	26.2
7	AN297	Ballweber, Hettie L.	1995	Phase I Archaeological Survey, Lighthouse Landing Subdivision, Anne Arundel County, Maryland	53.89
7	AN328	Ballweber, Hettie L.	1996	Phase I Archaeological Survey Bay Watch Estates Subdivision, Anne Arundel County, Maryland	10.37
7	AN372	Ballweber, Hettie L.	1999	Phase I Archaeological Survey of the Windsor Property, Anne Arundel County, Maryland	51.89
7	AN421	Ward, Jeanne A.	1999	Phase I Archaeological Survey of the Proposed Belfield Farm Subdivision, Anne Arundel County, Maryland	30.43
7	AN441	Sprinkle, John H., Jr. and Richard G. Ervin	2013	Archaeological Investigations at the Sharpe-Ridout-Boone Mill Complex (18AN652), US 50/301 Cape St. Clair Interchange, Including Phase I Archaeological Survey of the Proposed Busch's Frontage Road, Anne Arundel County, Maryland. MGS File Report No. 235; SH	4.28
7	AN486	Ward, Jeanne A.	2002	A Phase I Archaeological Survey of the Proposed Deep creek Development Subdivision Number 96-039 Anne Arundel County, Maryland	16.81

Corridor	Survey #	Authors	Year	Title	Acres
7	AN489	Ward, Jeanne A. and Eric Schmidt	2003	A Phase I Archaeological Survey of the Colonial Manor Single Family Condominium Subdivision Anne Arundel County, Maryland	17.68
7	AN492	Ward, Jeanne A. and Eric Schmidt	2003	A Phase I Archaeological Survey of the Proposed Broadneck Park Expansion Phase II-A Anne Arundel County, Maryland	6.93
7	AN498	Ward, Jeanne A.	2002	A Phase I Archaeological Survey of the Proposed Stonecrest Development Anne Arundel County, Maryland	13.86
7	AN654	Katz, Gregory	2014	Phase I and II Investigation of Seven Sites at Naval Support Activity Annapolis, Anne Arundel County, Maryland.	1.43
7	AN674	Espenshade, Christopher T. and Barbara J. Gundy	2016	Phase I Archaeological Studies, Proposed Stormwater Management Feature, US 50 over the Severn River, Anne Arundel County, Maryland. SHA Archaeological Report No. 512	0.24
7	AN697	Davenport, Christian, Michael B. Hornum, and Nathaniel Patch	2001	Phase I Archaeological Investigations for the Enyart Property, Anne Arundel County, Maryland.	17.28
7	AN698	Hill, Philip J.	2016	A Phase I Archaeological Survey of a 1.5-Acre Portion and an 870-Foot Access Road within the Whitehall Property: A 20.35-Acre Parcel Located on Whitehall Road in Anne Arundel County, Maryland	3.47
7	DO51	Lowery, Darrin	1996	Archaeological Survey Work on Maryland's Eastern Shore During the 1996 Field Season.	4.74
7	QU18	Dinnel, Katherine J.	1990	Phase IB Intensive Archaeological Survey Of The Proposed Chesapeake Bay Environmental Educational Visitors Center, Kent Island, Queen Anne's County, Maryland	98.04

# CULTURAL RESOURCES TECHNICAL REPORT

Corridor	Survey #	Authors	Year	Title	Acres
7	QU19	Ward, Jeanne A., Tod L. Benedict, and John P. McCarthy	1990	Phase IB Archaeological Survey: Improvements To Maryland Route 8 From Old Matapeake Ferry Road To South Of US 50/301, Queen Anne's County, Maryland	26.09
7	QU21	Custer, Jay F.	1991	Phase I Archaeological Survey of Proposed Construction Area, Bay Bridge Airport, Queen Anne's County, Maryland	4
7	QU23	Balicki, Joseph and Donna J. Seifert	1991	Phase IB Intensive Archaeological Survey For The Kent Island Facility At Cox Neck Road, Queen Anne's County, Maryland	39.31
7	QU24	Resnick, Benjamin, David L. Cremeens, and James A. Duff	1992	Phase I Cultural Resources Investigation Of The Proposed Bay Bridge Airport Taxiway Extension, Stevensville, Queen Anne's County, Maryland	4.21
7	QU30	Lowery, Darrin	1992	A Supplementary Report of the 1992 Archaeological Survey Of Kent Island, Queen Anne's County, Maryland	600.48
7	QU32	Botwick, Bradford	1995	Phase I Archaeological Survey of the Maryland Route 18A Project, Queen Anne's County, Maryland	16.13
7	QU35	Lowery, Darrin	1993	Archaeological Survey Of The Chester River, The Wye River, and The Prospect Bay Drainages, Queen Anne's County, Maryland	492.9
7	QU36	Bedell, John C.	1995	Phase I Archaeological Survey of the Proposed Marina Location Queenstown Harbor Queen Anne's County, Maryland	0.43
7	QU37	Fiedel, Stuart J.	1999	Phase IB Archaeological Survey US 50 from MD 18 to MD 404, Queen Anne's County, Maryland	51.6

# CULTURAL RESOURCES TECHNICAL REPORT

Corridor	Survey #	Authors	Year	Title	Acres
7	QU45	Ward, Jeanne A.	2002	A Phase I Cultural Resources Investigation of the proposed White's Heritage/Gibson's Grant Development Queen Anne's County, Maryland	143.07
7	QU71	Tyler, Jason L., Jeanne A. Ward, and W. Brett Arnold	2014	A Phase I Archaeological Survey of the Waterman Property, Queen Anne's County, Maryland.	77.57
7	QU77	Lowery, Darrin, Michael A. O'Neal, and Daniel Wagner	2016	Phase II Archaeological Survey of the Waterman Property, Queen Anne's County, Maryland	39.4
7	Pending #	Gibb Archaeological Consulting	2017	A Phase I Intensive Archaeological Survey of Lots 1 through 5 of the Harmony Springs Residential Subdivision, Bay Head Road and Harmony Lane, Capte St. Claire, Anne Arundel County, Maryland	N/A
7	Pending #	Gibb Archaeological Consulting	2018	Phase I Archaeological Survey of the Proposed Knights of Columbus Hall, 610 North Bestgate Rd, Annapolis, Anne Arundel County, Maryland.	N/A
7	Pending #	The Ottery Group	2018	Management Summary - Excavation Monitoring for the Asbury Broadneck United Methodist Church Stormwater Mitigation Project Arnold, Anne Arundel County, Maryland.	N/A
7	Pending #	Dovetail	2020	Phase I Survey Report pending for Severnside, AA-312 and 18AN1602	N/A
7	Pending #	Hill, Philip J.	2013	Management Summary: A Phase I Archeological Survey of the proposed Kilkenny office complex: A 1.33 acre development portion of a 5.41 acre property located on US 50/301	1.33

Corridor	Survey #	Authors	Year	Title	Acres
8	AN126	Ballweber, Hettie L., Laurie Greenberg, and Amy Hyatt	1990	Preliminary Archaeological Reconnaissance of the Java History Trail, Smithsonian Environmental Research Center, Anne Arundel County, Maryland	23.28
8	AN200	Walker, Mark, Michael D. Petraglia, Madeleine Pappas, and Christopher Martin	1991	Archaeological Survey and Testing at the South River Colony, Anne Arundel County	61.05
8	AN201	Rosenthal, Mara Elene, Gregory Mikell, and Madeleine Pappas	1992	Phase I Archaeological Survey of the Wynnewood Property, Anne Arundel County, Maryland	151.83
8	AN243	Neumann, Thomas W. and Martha R. Williams	1990	A Phase I Intensive Archaeological Investigation of the Novak Property, Anne Arundel County, Maryland	32.62
8	AN289	Gibb, James G.	1994	A Phase I Archaeological Identification Survey of the Bennett Tract, Mayo, Anne Arundel County, Maryland	4.41
8	AN346	Mintz, John J., Michelle T. Moran, Colby A. Child, Thomas W. Davis, and Christopher R. Polglase	1993	Phase I Archaeological Survey of the Beards Creek Estates Subdivision, Anne Arundel Co., MD	53.59
8	AN357	Ebright, Carol A.	1999	Phase I Archaeological Investigations for the MD 424 at Rossback Road Storm Water Management Pond, Anne Arundel Co., Maryland.	1.18
8	AN381	Ballweber, Hettie L.	1998	Phase I Archaeological Survey of the South River Colony Subdivision (Parcel F), Anne Arundel County, Maryland	2.56
8	AN426	Torp, Lyle C.	2000	Management Summary: A Phase I Archaeological Investigation of the Reserved Critical Area of the Coxby's Estates Subdivision Tract, Anne Arundel County, Maryland	78.92
8	AN451				4.82
8	AN468				0.88

Corridor	Survey #	Authors	Year	Title	Acres
8	AN496	Gibb, James G.	2003	Phase I Archaeological Survey of the Proposed Tarnans Branch Stream Restoration North of US 50, Davidsonville, Anne Arundel County, Maryland	0.47
8	AN514	Rutledge, Thomas	2005	Phase I Archaeological Survey of the Muffley Property Subdivision Mayo, Anne Arundel county, Maryland	16.86
8	AN525	Franz, Karl	2005	Phase I Archaeological Survey of the Home Court Residential Development, Edgewater, Anne Arundel County, Maryland	18.47
8	AN572	Goodwin, James, Jason L. Tyler, Jeanne A. Ward, and Katherine D. Birmingham	2009	A Phase I Archaeological Investigation of the Mayo Beach Waterfront Anne Arundel County, Maryland	6.41
8	AN585	Cox, C. Jane	2007	Survey and Limited Assessment of Archaeological Resources in the Rhode River Region, Anne Arundel County, Maryland	3094.64
8	AN701	Gibb, James G., Sarah A. Grady, and Richard S. Gorski	2013	A Phase II Site Examination of the Sellman House Site (18AN1431), 506 Contee's Wharf Road, Edgewater, Anne Arundel County, Maryland.	6.44
8	TA21	Simons, Michael A., Geoffrey E. Melhuish, W. Thomas Dod, Kathryn M. Kuranda, and Christopher R. Polglase	1994	Phase I Archaeological Survey and Architectural Investigations of the Proposed Delmarva Power & Light Company Easton-Steele 138 KV Transmission Line, Maryland	58.21
8	TA50	Lowery, Darrin	2010	Phase I Archaeological Survey of the Bay Hundred District within Western Talbot County, Maryland.	330.92
8	TA52	Otter, Edward	2011	Phase I Archaeological Survey Between Route 50 and Hailem School Road, Easton, Talbot County, Maryland.	227.71



**Appendix D. Corridor 6 Archaeological Surveys, Recorded Archaeological Sites,  
and Known Shipwrecks Map**

**Contains sensitive archaeological site location information.  
Not for public disclosure.**

**Appendix E. Corridor 7 Archaeological Surveys, Recorded Archaeological Sites,  
and Known Shipwrecks Map**

**Contains sensitive archaeological site location information.  
Not for public disclosure.**

**Appendix F. Corridor 8 Archaeological Surveys, Recorded Archaeological Sites,  
and Known Shipwrecks Map**

**Contains sensitive archaeological site location information.  
Not for public disclosure.**

---

## Appendix G. Previously Conducted Underwater Archaeological Surveys

---

## CULTURAL RESOURCES TECHNICAL REPORT

Corridor	Survey #	Author	Year	Title	Acres
6	AN433	Bilicki, Stephen R.	2001	A Phase I Survey for Submerged Archaeological Resources on the Magothy River Anne Arundel County, Maryland	171.89
6	AN472	Bilicki, Stephen R., Lauren Franz	2005	Phase I Underwater Survey in the Bodkin Creek Waterway of Anne Arundel County, Maryland	75.51
6	AN691	Lydecker, Andrew D.W., William Wilson, Stephen R. James, Jr., and Erica Gifford	2017	Cultural Resources Investigation for the Widening of the Chesapeake Bay Approach Channel, Craighill Entrance to Cutoff Angle, Chesapeake Bay, Maryland.	157.84
6	KE37	Bilicki, Stephen R.	2006	NOAA Grant Number :OE-2004-016 Search for the War of 1812 HMS Mary Tender Final Progress Report	226.09
6	KE39	Seidel, John L.	2005	Submerged Historical Cultural Resource Survey of Portions of the Chester River, Kent & Queen Anne's Counties, Maryland	86.3
6	MD164	Thompson, Bruce F	2000	Phase I Survey for Submerged Archaeological Resources Within Maryland's Susquehanna Drainage Basin and Easternshore Coastal Plain Province. (Maryland Maritime Archaeology Program (MMAP) File Report No. 005.)	97.72
7	AN270	Cox, J. Lee, Jr.	1994	Phase I Underwater Archaeological Survey, MD 436 Over Weems Creek Bridge NO. 2081 Replacement, Anne Arundel County, Maryland	2.91
7	AN504	Thompson, Bruce F.	2001	A Phase I Survey for Submerged Archaeological Resources Within Maryland's Northwestern Shore, Patuxent and Potomac Drainage Basins: Meredith, Whitehall, Ridout, Mill and Church Creeks and West, Rhodes, Patuxent, Potomac and St. Mary's Rivers, Anne Arundel	129.82
7	QU38	Bilicki, Steven R.	1998	Phase I Survey for Submerged Archaeological Resources on Kent Island, Queen Anne's County, Maryland	29.26

# CULTURAL RESOURCES TECHNICAL REPORT

Corridor	Survey #	Author	Year	Title	Acres
8	AN504	Thompson, Bruce F.	2001	A Phase I Survey for Submerged Archaeological Resources Within Maryland's Northwestern Shore, Patuxent and Potomac Drainage Basins: Meredith, Whitehall, Ridout, Mill and Church Creeks and West, Rhodes, Patuxent, Potomac and St. Mary's Rivers, Anne Arundel	139.33
8	MD164	Thompson, Bruce F.	2000	Phase I Survey for Submerged Archaeological Resources Within Maryland's Susquehanna Drainage Basin and Easternshore Coastal Plain Province. (Maryland Maritime Archaeology Program (MMAAP) File Report No. 005.)	82.16
8	QU16	Irion, Jack B.	1990	Combined Phase I and Phase II Remote Sensing Cultural Resources Survey For The Deep Trough Dredge Disposal Area, Kent Island, Maryland	897.91

## Appendix H. Recorded Terrestrial and Underwater Archaeological Sites

# CULTURAL RESOURCES TECHNICAL REPORT

Corridor	Site #	Site Name	Component	Cultural Affiliation/Period and Site Type	NRHP Status
6	18AN14	Long Point	Prehistoric	Woodland hamlet or village	Unevaluated
6	18AN168	Jacobsville	Multi-Component	Late Archaic lithic scatter, historic artifact scatter	Unevaluated
6	18AN258	Upper Magothy	Prehistoric	Woodland shell midden	Unevaluated
6	18AN272	Tar Cove	Prehistoric	Woodland shell midden	Unevaluated
6	18AN581	Bodkin/Lakeshore School	Historic	late 19th - 20th century school ruin	Unevaluated
6	18AN654	Green Spring #1	Prehistoric	Late Archaic and Early, Middle, & Late Woodland base camp/short-term resource procurement camps	Unevaluated
6	18AN655	Green Spring #2	Prehistoric	prehistoric short-term resource procurement	Unevaluated
6	18AN656	Green Spring #3	Prehistoric	Woodland short-term resource procurement	Unevaluated
6	18AN657	Green Spring #4	Prehistoric	prehistoric lithic scatter	Unevaluated
6	18AN658	Green Spring #6	Multi-Component	prehistoric lithic scatter, 19th-20th century artifact scatter	Unevaluated
6	18AN659	Green Spring #11	Multi-Component	prehistoric lithic scatter, 19th-20th century artifact scatter	Unevaluated
6	18AN660	Green Spring #12	Multi-Component	prehistoric lithic scatter, 19th-20th century artifact scatter	Unevaluated
6	18AN661	Green Spring #15	Historic	20th century standing house, tenant house foundation, and artifact scatter	Unevaluated
6	18AN662	Green Spring #16/17	Prehistoric	prehistoric lithic scatter	Unevaluated
6	18AN777	Blue Waters	Historic	19th-20th century artifact scatter	Unevaluated
6	18AN857	Lake Shore Farm Complex	Historic	late 18th-20th century farmstead complex	Unevaluated
6	18AN949	Pinehurst Canal	Multi-Component	late 18th century canal, prehistoric artifact collection	Unevaluated
6	18AN1166	Bottomley 2	Historic	early 20th century farmstead	Unevaluated
6	18AN1173	Looper	Historic	mid-20th century house site	Unevaluated
6	18AN1185	Mrs. Stauf's House	Historic	late 19th-early 20th century house site	Unevaluated
6	18AN1527	Buck	Historic	Late 19th-Early 20th century farmstead with large night soil deposit	Unevaluated
6	18AN1589	Hyde Park Estate	Historic	Mid 20th-century manuring site	Unevaluated
6	18KE318	Gray's Inn #4	Multi-Component	prehistoric shell midden and historic artifact scatter	Unevaluated
6	18KE319	Gray's Inn #5	Historic	late 18th century bottle base	Unevaluated
6	18KE344	Grays Inn Point Farm #1	Prehistoric	historic field scatter and prehistoric shell midden and lithic scatter	Unevaluated
6	18KE350	Gray's Inn Launching Poles	Historic	19th century launching poles	Unevaluated
6	18KE369	Nichols Point Underwater	Prehistoric	Middle Archaic possible base camp with burials, inundated 1 mi SSW of Nichols Point, in the Chester River	Unevaluated
6	18KE405	Chesapeake Bay Found. #07-4	Multi-Component	Late Archaic & Early Woodland short-term camp; Late 17th-19th century possible house site	Unevaluated
6	18KE406	Aiello Farm #07-5A	Prehistoric	Late Woodland short-term camp	Unevaluated
6	18KE407	Aiello Farm #07-5B	Historic	Late 17th-18th century artifact concentration, possible domestic site	Unevaluated
6	18KE430	Swan Point Channel Wreck	Historic	Shipwreck of small boat	Unevaluated
6	18KE435	Swan Point Channel Wreck #2	Historic	Historic shipwreck	Unevaluated



# CULTURAL RESOURCES TECHNICAL REPORT

Corridor	Site #	Site Name	Component	Cultural Affiliation/Period and Site Type	NRHP Status
6	18QU218	Denbigh Farm	Multi-Component	Archaic and Woodland lithic and 19th century artifact scatter	Ineligible
6	18QU512	Corsica Neck Site No. 1	Historic	late 19th - 20th century house site	Unevaluated
6	18QU513	Corsica Neck Site No. 2	Historic	20th century artifact scatter	Unevaluated
6	18QU514	Grove Creek Midden	Prehistoric	Woodland shell midden	Unevaluated
6	18QU614	Corsica Neck	Prehistoric	prehistoric shell midden	Unevaluated
6	18QU615	Grove Creek #1	Prehistoric	prehistoric shell midden	Unevaluated
6	18QU616	Grove Creek #2	Prehistoric	prehistoric shell midden	Unevaluated
6	18QU623	Wright's Neck Site No. 1	Prehistoric	prehistoric shell midden	Unevaluated
6	18QU624	Wright's Neck Site No. 2	Prehistoric	prehistoric shell midden	Unevaluated
6	18QU625	Wright's Neck Site No. 3	Prehistoric	prehistoric shell midden	Unevaluated
6	18QU792	Griffith	Prehistoric	prehistoric shell midden	Unevaluated
6	18QU828	Bloomingdale/Brown Intersect.	Prehistoric	Early Archaic lithic scatter	Unevaluated
6	18QU941	Rhodes Farm Site #2	Multi-Component	Late Archaic lithic scatter, 19th-20th century tenant house site	Unevaluated
6	18QU945	Rhodes Farm Site #6	Prehistoric	prehistoric short-term camp	Unevaluated
6	18QU1045	Possible Chester Church	Historic	Historic brick wall and entry steps, possibly to a church	Unevaluated
6	GIBSON-QF02	N/A	Unknown	Historic reference to this area. See notes in lead file.	Unevaluated
6	LANGFO-QF02	N/A	Unknown	Reported but not confirmed Wilke-Thompson 1974.	Unevaluated
6	LANGFO-QF03	N/A	Unknown	Reported but not confirmed Wilke-Thompson 1974.	Unevaluated
6	LANGFO-QF04	N/A	Historic	Potential location of 17th century New Yarmouth.	Unevaluated
6	LANGFO-QF05	N/A	Prehistoric	Point on beach found by B. McMullan 27 June 1973.	Unevaluated
6	LANGFO-QF11	N/A	Historic	Approximate location of bridge to Harris Wharf (length of less than 100 yards in 1909), per information gathered during Phase IA Underwater Archaeological Project (AE) ca. 1990 by Bastian and Shomette, per historic maps.	Unevaluated
6	LANGFO-QF12	N/A	Historic	Approximate location of small private pier, per information gathered during Phase IA Underwater Archaeological Project (AT) ca. 1990 by Bastian and Shomette, per historic maps.	Unevaluated
7	18AN139	Severn Forest	Prehistoric	Woodland shell midden	Unevaluated
7	18AN140	Martin's Pond Kiln	Multi-Component	brick kiln or house site, possibly 18th century; Historic shell midden	Unevaluated
7	18AN141	Martin's Pond	Multi-Component	stratified Early, Middle, and Late Woodland shell midden; 18th century artifact scatter	Listed
7	18AN142	Luce Creek Kiln	Historic	possible brick kiln possibly dating to the 18th century	Unevaluated
7	18AN143	Luce Creek	Prehistoric	Middle Woodland shell midden	Unevaluated
7	18AN144	Cove of Cork	Prehistoric	Woodland shell midden	Unevaluated

# CULTURAL RESOURCES TECHNICAL REPORT

Corridor	Site #	Site Name	Component	Cultural Affiliation/Period and Site Type	NRHP Status
7	18AN145	Severn Bridge	Prehistoric	Late Archaic lithic and shell scatter	Unevaluated
7	18AN1451	Gardiner/Tydings Plantation	Historic	18th, 19th, and 20th century farm complex. Possible Mid-Late 17th century occupation. Mill?	Unevaluated
7	18AN146	Weems Creek I	Prehistoric	prehistoric lithic scatter	Unevaluated
7	18AN147	Weems Creek II	Prehistoric	Woodland scattered shell midden	Unevaluated
7	18AN148	Weems Creek III	Prehistoric	prehistoric shell midden	Unevaluated
7	18AN1576	Whitehall Site 2	Historic	Post-1820 trash scatter	Unevaluated
7	18AN1609	Severnside Shell Midden	Prehistoric	Shell midden	Unevaluated
7	18AN1659	Winchester Pond #2	Multi-Component	Late Archaic, Middle Woodland, and Late Woodland shell midden; Late 19th-Early 20th century artifact scatter	Unevaluated
7	18AN17	Brice Farm	Multi-Component	Late Archaic camp and Early, Middle, and Late Woodland shell midden and village, historic artifacts	Unevaluated
7	18AN534	Sandy Point Farmhouse	Historic	19th century brick farmhouse	Listed
7	18AN613	General J.A. Dumont Shipwreck	Historic	19th-20th century side-wheel steamer shipwreck	Unevaluated
7	18AN614	Redemptorist	Prehistoric	shell midden	Unevaluated
7	18AN652	Sharpe-Ridout-Boone Mill	Multi-Component	Prehistoric lithic scatter, Late 18th-Late 19th century mill, dam, raceway, and miller's house	Eligible
7	18AN671	Trough	Historic	20th century outbuilding site	Ineligible
7	18AN672	L. Bourk	Historic	19th century brick foundation	Unevaluated
7	18AN820	House	Historic	late 19th-20th century buried house remains, artifact concentration	Unevaluated
7	18AN828	Pleasant Plains Farm I	Historic	late 17th-early 18th century artifact concentration	Unevaluated
7	18AN870	Cole	Prehistoric	prehistoric shell midden	Unevaluated
7	18AN871	Belfield	Multi-Component	late 17th - early 20th century plantation; 2 prehistoric celts in 18th century features	Unevaluated
7	18AN878	Howard's Inheritance	Multi-Component	Early-Middle Woodland short-term resource procurement, 18th-19th century standing farmstead	Unevaluated
7	18AN89	Flood Springs	Multi-Component	Early [poss. Adena], Middle, and Late Woodland short-term camps; Mid-20th century house, water bottling plant	Unevaluated
7	18AN891	Captain Dodd's Landing	Historic	submerged late 19th century wharf/landing, related farmstead	Unevaluated
7	18AN894	Meredith Creek Shell Midden #3	Prehistoric	Prehistoric shell midden	Unevaluated
7	18AN895	Meredith Creek Shell Midden #4	Prehistoric	Prehistoric shell midden	Unevaluated
7	18AN896	Meredith Creek Shell Midden #5	Prehistoric	Prehistoric shell midden	Unevaluated
7	18AN897	Meredith Creek Shell Midden #6	Prehistoric	Prehistoric shell midden	Unevaluated
7	18AN90	Pettebone	Prehistoric	prehistoric artifact scatter	Unevaluated
7	18AN906	Mill Creek Pier	Historic	late 19th-early 20th century submerged wharf/landing	Unevaluated
7	18AN909	Boat Frames Wreck	Historic	Late 17th, 18th, or early 19th century submerged boat frames, vessel remains	Unevaluated

# CULTURAL RESOURCES TECHNICAL REPORT

Corridor	Site #	Site Name	Component	Cultural Affiliation/Period and Site Type	NRHP Status
7	18AN95	Severnside	Prehistoric	Woodland shell midden	Unevaluated
7	18AN96	Winchester on the Severn	Prehistoric	Woodland shell midden	Unevaluated
7	18AN963	Lighthouse Landing	Historic	18th century artifact concentration	Unevaluated
7	18AN968	A.A. Co. DPW	Historic	historic wharf/landing	Unevaluated
7	18AN97	Chase Creek	Prehistoric	Woodland shell midden	Unevaluated
7	18AN98	Winchester Pond	Multi-Component	Late Archaic and Early Woodland shell midden; Mid-late 20th century artifact scatter	Unevaluated
7	18AN1148	Deep Creek Farm	Historic	late 18th - 20th century artifact concentration	Unevaluated
7	18AN1187	Seznec	Historic	18th century plantation site	Unevaluated
7	18AN1192	Enyart Site 1	Multi-Component	late 18th-20th century artifact concentration, prehistoric lithic scatter	Unevaluated
7	18AN1237	Broadneck Park	Historic	Early 20th century refuse dump	Ineligible
7	18AN1331	Stonecrest	Historic	Early 20th century frame house and detached cinder block garage	Unevaluated
7	18AP5	Skorpas	Prehistoric	prehistoric lithic scatter	Unevaluated
7	18AP6	Shady Lake	Prehistoric	shell heap	Unevaluated
7	18AP7	Cady Cove	Prehistoric	prehistoric lithic scatter	Unevaluated
7	18AP77	Site 3	Historic	Late 19th-early 20th century military hospital	Ineligible
7	18QU1038	Wheatlands	Multi-Component	Late 17th-mid 20th century plantation; Middle Woodland short-term camp	Unevaluated
7	18QU1042	4600 Main Street, Grasonville	Historic	Late 19th century house foundation	Unevaluated
7	18QU216	Peterson	Prehistoric	prehistoric shell midden	Unevaluated
7	18QU220	Stevensville Barge	Historic	Late 19th or early 20th century barge shipwreck	Unevaluated
7	18QU235	CBVC #1	Multi-Component	Archaic lithic and late 18th - early 20th century artifact scatter	Unevaluated
7	18QU236	CBVC #2	Multi-Component	prehistoric lithic and 18th-early 19th century artifact scatter	Unevaluated
7	18QU237	CBVC #3	Multi-Component	Late Archaic lithic scatter, mid-18th century house site	Unevaluated
7	18QU238	CBVC #5	Multi-Component	Archaic lithic and 19th-20th century artifact scatter	Unevaluated
7	18QU244	MD-Kent-1	Multi-Component	prehistoric lithic and late 18th-19th century artifact scatter	Unevaluated
7	18QU245	MD-Kent-2	Historic	19th century farmstead	Unevaluated
7	18QU246	MD-Kent-3	Historic	late 19th - early 20th century farmstead	Unevaluated
7	18QU261	Kirwin Farm	Prehistoric	eroding shell pit	Unevaluated
7	18QU262	Goodhands Landing	Historic	19th century domestic site	Unevaluated
7	18QU263	Baxter/Gardner/Jones/Kirwin Ce	Historic	historic cemetery	Unevaluated
7	18QU266	Kent Island Inn	Historic	late 19th - 20th century refuse	Unevaluated
7	18QU289	Old Inn	Historic	old inn, possible Colonial	Unevaluated
7	18QU3	Piney Creek/Kent Narrows	Prehistoric	Woodland shell midden	Unevaluated
7	18QU305	Goodhand's Point	Multi-Component	Middle Woodland lithic scatter, 20th century dump site	Unevaluated

# CULTURAL RESOURCES TECHNICAL REPORT

Corridor	Site #	Site Name	Component	Cultural Affiliation/Period and Site Type	NRHP Status
7	18QU306	Wading Place	Prehistoric	Late Woodland shell midden	Unevaluated
7	18QU309	Kirwan Creek	Prehistoric	Late Archaic lithic scatter	Unevaluated
7	18QU312	Gardener's Purchase	Prehistoric	Archaic - Woodland base camp and shell midden	Unevaluated
7	18QU313	Hog Island Neck	Prehistoric	Late Archaic lithic scatter	Unevaluated
7	18QU319	Piney Creek	Prehistoric	Middle-Late Archaic lithic scatter	Unevaluated
7	18QU335	Broad Creek Adena	Prehistoric	submerged Adena single find	Unevaluated
7	18QU361	West Kent Island Inn	Historic	Late Archaic lithic scatter, possible Colonial site	Unevaluated
7	18QU362	Baltimore & Eastern RR Bridge	Historic	Late 19th-Early 20th century railroad bridge (since replaced)	Ineligible
7	18QU373	Railroad Farmhouse	Historic	Late 19th-Mid 20th century farmhouse, possible former 18th century structure on property	Unevaluated
7	18QU374	North Coxes Bridge	Historic	historic shell scatter	Ineligible
7	18QU375	Coxes Headwater	Prehistoric	prehistoric lithic scatter	Ineligible
7	18QU408	Macum Knoll	Multi-Component	Late Archaic & possibly Middle Woodland lithic scatter; 18th-19th century artifact scatter	Unevaluated
7	18QU409	Macum Creek	Historic	Early 18th and 19th century house site and mid-19th century cemetery	Ineligible
7	18QU411	Christ Church	Historic	Christ Church and Cemetery - 18th century	Unevaluated
7	18QU413	Horsehead Locality No. 1	Prehistoric	Middle Woodland, Late Woodland shell midden	Unevaluated
7	18QU414	Horsehead Locality No. 2	Prehistoric	Woodland lithic scatter	Unevaluated
7	18QU415	Horsehead Locality No. 3	Prehistoric	Middle Woodland shell midden	Unevaluated
7	18QU416	Horsehead Locality No. 4	Prehistoric	Early - Late Woodland base camp	Unevaluated
7	18QU417	Horsehead Locality No. 5	Prehistoric	Late Woodland artifact scatter	Unevaluated
7	18QU419	Bluebeard Locality No. 1	Prehistoric	prehistoric shell midden	Unevaluated
7	18QU420	Bluebeard Locality No. 2	Prehistoric	prehistoric lithic reduction area	Unevaluated
7	18QU421	Bluebeard Locality No. 3	Prehistoric	prehistoric lithic scatter	Unevaluated
7	18QU422	Bluebeard Locality No. 4	Prehistoric	prehistoric lithic scatter	Unevaluated
7	18QU423	Bluebeard Locality No. 5	Prehistoric	prehistoric lithic and shell scatter	Unevaluated
7	18QU424	Bluebeard Locality No. 6	Prehistoric	prehistoric lithic scatter	Unevaluated
7	18QU425	Bluebeard Locality No. 7	Prehistoric	prehistoric shell midden	Unevaluated
7	18QU426	Bluebeard Locality No. 8	Prehistoric	prehistoric shell midden	Unevaluated
7	18QU427	Bluebeard Locality No. 9	Prehistoric	prehistoric shell midden	Unevaluated
7	18QU428	Bluebeard Locality No. 10	Prehistoric	prehistoric shell midden	Unevaluated
7	18QU429	Bluebeard Locality No. 11	Prehistoric	prehistoric shell midden	Unevaluated
7	18QU430	Bluebeard Locality No. 12	Prehistoric	prehistoric shell midden	Unevaluated
7	18QU431	Bluebeard Locality No. 13	Prehistoric	prehistoric lithic scatter	Unevaluated
7	18QU432	Nesbit Locality No. 1	Prehistoric	prehistoric lithic scatter and refuse pits	Unevaluated
7	18QU433	Nesbit Locality No. 2	Prehistoric	prehistoric lithic and shell scatter	Unevaluated

# CULTURAL RESOURCES TECHNICAL REPORT

Corridor	Site #	Site Name	Component	Cultural Affiliation/Period and Site Type	NRHP Status
7	18QU434	Nesbit Locality No. 3	Prehistoric	prehistoric lithic and shell scatter	Unevaluated
7	18QU435	Nesbit Locality No. 4	Prehistoric	Late Archaic and Middle Woodland shell midden	Unevaluated
7	18QU436	Nesbit Locality No. 5	Prehistoric	Middle Woodland and Late Woodland shell midden	Unevaluated
7	18QU437	Nesbit Locality No. 6	Prehistoric	unverified shell midden with burial(s)	Unevaluated
7	18QU438	Nesbit Locality No. 7	Prehistoric	prehistoric lithic and shell scatter	Unevaluated
7	18QU439	Nesbit Locality No. 8	Prehistoric	prehistoric shell midden	Unevaluated
7	18QU440	Nesbit Locality No. 9	Prehistoric	prehistoric lithic and shell scatter	Unevaluated
7	18QU441	Nesbit Locality No. 10	Prehistoric	prehistoric lithic and shell scatter	Unevaluated
7	18QU442	Nesbit Locality No. 11	Historic	shell scatter with fire-cracked rock and brick	Unevaluated
7	18QU443	Nesbit Locality No. 12	Prehistoric	prehistoric lithic and shell scatter	Unevaluated
7	18QU444	Winchester Creek	Prehistoric	shell midden	Unevaluated
7	18QU51	W-T, near QA-B 5	Prehistoric	small pit feature with shell scatter	Unevaluated
7	18QU61	DCC- US 50/301 #3	Multi-Component	Woodland lithic and minor historic artifact scatter	Unevaluated
7	18QU62	DCC- US 50/301 #4	Multi-Component	Possibly Middle Woodland lithic scatter, historic pipestem	Unevaluated
7	18QU63	DCC- US 50/301 #5	Prehistoric	prehistoric shell midden and lithic scatter	Unevaluated
7	18QU64	DCC- US 50/301 #6	Multi-Component	Late Archaic and Late Woodland artifact and shell scatter; Historic artifact scatter	Unevaluated
7	18QU66	Pier 1	Multi-Component	prehistoric and Colonial site	Unevaluated
7	18QU790	Queenstown Harbor	Prehistoric	prehistoric shell midden	Unevaluated
7	18QU914	Cox Creek #1	Unknown	unknown shell midden	Unevaluated
7	18QU915	Cox Creek #2	Unknown	unknown shell midden	Unevaluated
7	18QU916	Cox Creek #3	Historic	19th century trash pit	Unevaluated
7	18QU917	Cox Creek #4	Historic	19th century wharf or landing	Unevaluated
7	18QU962	Cray House	Historic	Early 19th century frame house	Unevaluated
7	18QU968	Gibson's Grant 1	Multi-Component	prehistoric lithic scatter, Late 17th to early 18th century house site	Eligible
7	18QU969	Gibson's Grant 2	Prehistoric	Late Woodland lithic scatter	Unevaluated
7	18QU970	Gibson's Grant 3	Multi-Component	prehistoric lithic scatter, Early to Mid 19th century artifact concentration, possible outbuilding	Ineligible
7	18QU971	Gibson's Grant 4	Historic	19th to 20th century field scatter	Ineligible
7	18QU973	Gibson's Grant 6	Historic	late 19th century artifact concentration, possible outbuilding	Ineligible
7	18QU974	Gibson's Grant 7	Multi-Component	prehistoric lithic scatter, historic artifact scatter	Ineligible
7	18QU975	Gibson's Grant 8	Multi-Component	prehistoric lithic scatter, 20th century trash dump	Ineligible
7	18QU976	Gibson's Grant 9	Historic	oyster shell concentration. Possibly a former shell-lined driveway.	Unevaluated
7	18QU992	Cloisters Site 1	Historic	18th-20th century artifact scatter	Unevaluated
7	18QU993	Cloisters Site 2	Historic	Late 19th-Early 20th century artifact scatter	Unevaluated

# CULTURAL RESOURCES TECHNICAL REPORT

Corridor	Site #	Site Name	Component	Cultural Affiliation/Period and Site Type	NRHP Status
7	ANNAPO-QF01	N/A	Unknown	Site reported by Mel Thurman, January 1971.	Unevaluated
7	ANNAPO-QF04	N/A	Prehistoric	Two full-grooved axes in MHS collection, 73.44.33, 73.44.35.	Unevaluated
7	GIBSON-QF06	N/A	Multi-Component	Woodland ceramics and lithics and historic stoneware and glass reported by former property owner. See memo to file from Charlie Hall dated 19 February 2002 in Quad File folder.	Unevaluated
7	GIBSON-QF07	N/A	Historic	Includes remnants of steamboat period wharf on western shore of Mill Creek, visible at low tide. 35m long, 42m wide. Diver testing found no diagnostics. MMAP survey by Thompson 1991.	Unevaluated
7	GIBSON-QF11	N/A	Historic	Boat-shaped object standing proud of the bottom 35m off shore at mouth of Orchard Creek. 12m x 4m. Diver tests in 1991 did not produce target. MMAP survey by Thompson 1991.	Unevaluated
7	KENTIS-QF03	N/A	Unknown	Shell heap. Transcribed from Annapolis 15' (1892) quad in U.S. National Museum, Division of Archaeology, not accessioned but filed with R. Stearns collection (Acc. #191329) and notations appear to be in Stearns' handwriting.	Unevaluated
7	KENTIS-QF04	N/A	Prehistoric	Probable village site, Tolson Farm. Transcribed from Annapolis 15' (1892) quad in U.S. National Museum, Division of Archaeology, not accessioned but filed with R. Stearns collection (Acc. #191329) and notations appear to be in Stearns' handwriting.	Unevaluated
7	KENTIS-QF05	N/A	Prehistoric	Probable village site, Tolson Farm. Transcribed from Annapolis 15' (1892) quad in U.S. National Museum, Division of Archaeology not accessioned but filed with R. Stearns collection (Acc. #191329) and notations appear to be in Stearns' handwriting.	Unevaluated
7	KENTIS-QF10	N/A	Prehistoric	Tocwogh. ? Seven miles from Love Point burials and potsherds. Transcribed from Annapolis 15' (1892) quad in U.S. National Museum, Division of Archaeology, not accessioned but filed with R. Stearns collection (Acc. #191329).	Unevaluated
7	KENTIS-QF16	N/A	Historic	Field survey by MHT 27 August 1982. About 10 out of 20 non-systematic shovel tests yielded diffuse shell in the top 10cm, but no dense middens were observed. Shell lens w/bottle glass noted in one 10m area of eroded shoreline. See form in folder.	Unevaluated
7	KENTIS-QF17	N/A	Historic	Field survey by MHT 3 February 1983. 18 steps at 20-pace intervals yielded brick fragments probably associated with house across the road. Area filled during Bay Bridge construction. 18QU66 does not extend here. See form in Quad File folder.	Unevaluated

# CULTURAL RESOURCES TECHNICAL REPORT

Corridor	Site #	Site Name	Component	Cultural Affiliation/Period and Site Type	NRHP Status
7	KENTIS-QF18	N/A	Historic	Approximate location of landing on Broad Creek; per information gathered during Phase IA Underwater Archeological Project (AH) ca. 1990 by Bastian and Shomette, per historic maps.	Unevaluated
7	KENTIS-QF20	N/A	Historic	Approximate location of railroad bridge over Piney Creek; per information gathered during Phase IA Underwater Archeological Project (AL) ca. 1990 by Bastian and Shomette, per historic maps.	Unevaluated
7	KENTIS-QF21	N/A	Historic	Approximate location of bridge over Cox Creek; per information gathered during Phase IA Underwater Archeological Project (AM) ca. 1990 by Bastian and Shomette, per historic maps.	Unevaluated
7	KENTIS-QF22	N/A	Prehistoric	"Grit-tempered" prehistoric ceramic owl effigy found by grave digger at Stevensville Cemetery. Shown to Darrin Lowery in 1992. In possession [in 2011] of the widow of Easton dentist Laurence G. Claggett (d. 2009). Photos in file.	Unevaluated
7	QUEENS-QF02	N/A	Multi-Component	Rich sites, historic and prehistoric, per Orlando Ridout V. Transcribed from MHT confidential quad map 30 November 1981.	Unevaluated
7	QUEENS-QF11	N/A	Historic	Approximate location of Jackson Creek Landing (pier was 200 yards long in 1909), per information gathered during Phase IA Underwater Archeological Project (AC) ca. 1990 by Bastian and Shomette, per historic maps.	Unevaluated
7	QUEENS-QF14	N/A	Historic	Approximate location of Kent Narrows Bridge, per information gathered during Phase IA Underwater Archeological Project (AJ) ca. 1990 by Bastian and Shomette, per historic maps.	Unevaluated
7	QUEENS-QF15	N/A	Historic	Approximate location of railroad bridge over Kent Narrows, per information gathered during Phase IA Underwater Archeological Project (AK) ca. 1990 by Bastian and Shomette, per historic maps.	Unevaluated
7	QUEENS-QF16	N/A	Historic	Approximate location of abandoned Kent Narrows Bridge, per information gathered during Phase IA Underwater Archeological Project (AP) ca. 1990 by Bastian and Shomette, per historic maps.	Unevaluated
7	SOUTHR-QF13	N/A	Prehistoric	Isolated point find ANX15 reported by Heise 8 January 1982.	Unevaluated
8	18AN1003	Glen Lochner	Historic	early 19th century artifact concentration	Unevaluated
8	18AN1013	MR1	Historic	late 19th-early 20th century ruins	Unevaluated
8	18AN1015	Colhoun	Prehistoric	prehistoric submerged shell midden	Unevaluated
8	18AN1091	Site 1	Historic	late 19th - 20th century artifact concentration	Unevaluated
8	18AN1092	Site 2	Historic	late 18th - mid-19th century artifact concentration/domestic structure	Unevaluated



# CULTURAL RESOURCES TECHNICAL REPORT

Corridor	Site #	Site Name	Component	Cultural Affiliation/Period and Site Type	NRHP Status
8	18AN1094	West Puddington	Historic	17th - 20th century artifact concentration, possible domestic structure	Unevaluated
8	18AN1118	Prehistoric Site #1	Prehistoric	prehistoric lithic scatter	Unevaluated
8	18AN1204	Watkins Slave Cemetery	Historic	early to mid-19th century African-American (slave) cemetery/burial ground	Unevaluated
8	18AN1223	Belcher Mill	Historic	Possible Historic water mill. Age uncertain.	Unevaluated
8	18AN1227	Henderson	Historic	20th century house site	Unevaluated
8	18AN1257	Idlewild Farm	Historic	Late 17th to early 18th century eroded plantation site; 19th century artifact scatter from nearby site	Unevaluated
8	18AN1258	Stockett Grist Mill	Historic	19th century mill site	Unevaluated
8	18AN1278	Beverly Triton 1	Historic	Mid 19th-20th century farmstead	Unevaluated
8	18AN1279	Beverly Triton 2	Historic	Late 18th and 19th century farmstead	Unevaluated
8	18AN1280	Beverly Triton 3	Prehistoric	Possibly prehistoric shell midden	Unevaluated
8	18AN1281	Beverly Triton 5	Prehistoric	Middle & Late Woodland shell midden	Unevaluated
8	18AN1282	Beverly Triton 6	Historic	Early 20th century house site	Unevaluated
8	18AN1283	Camp Lett's 2	Prehistoric	Prehistoric shell midden	Unevaluated
8	18AN1284	Camp Lett's 6	Prehistoric	Late Woodland shell midden	Unevaluated
8	18AN1285	Camp Lett's 11	Multi-Component	Early, Middle, & Late Woodland shell midden; 19th century artifact scatter	Unevaluated
8	18AN1286	Hardesty Property 1	Historic	19th century farmstead	Unevaluated
8	18AN1287	Hardesty Property 2	Historic	Late 19th century farmstead	Unevaluated
8	18AN1288	Steuart Tenant House	Historic	Late 19th-late 20th century tenant farm site	Ineligible
8	18AN1309	Quick Property	Historic	Late 18th-19th century house site	Unevaluated
8	18AN1310	SERC Property 1	Prehistoric	Possibly historic shell midden adjacent to "rolling road"	Unevaluated
8	18AN1312	Beverly Beach	Historic	Early-Mid 20th century recreational beach/resort	Unevaluated
8	18AN1313	Triton Beach	Historic	Mid 20th century recreational beach/resort	Unevaluated
8	18AN1314	Beverly Triton 9	Prehistoric	Oyster Shell Midden	Unevaluated
8	18AN1315	Beverly Triton 10	Prehistoric	Oyster Shell Midden	Unevaluated
8	18AN1316	Cadle Creek 1	Prehistoric	Oyster Shell Midden	Unevaluated
8	18AN1317	Camp Lett's 4	Prehistoric	Oyster Shell Midden	Unevaluated
8	18AN1318	Camp Lett's 5	Prehistoric	Oyster shell scatter	Unevaluated
8	18AN1319	Camp Lett's 7	Prehistoric	Oyster shell deposit	Unevaluated
8	18AN1320	Camp Lett's 12	Prehistoric	Oyster Shell Midden	Unevaluated
8	18AN1321	Camp Lett's 13	Prehistoric	Oyster Shell Midden	Unevaluated
8	18AN1322	Kirk Patrick Howat 5	Historic	Late 18th-late 19th century house site, possible tenant house or slave quarter	Unevaluated
8	18AN1323	Kirk Patrick Howat 7	Prehistoric	Oyster Shell Midden	Unevaluated
8	18AN1404	Walton	Historic	Late 19th century artifact scatter	Unevaluated



# CULTURAL RESOURCES TECHNICAL REPORT

Corridor	Site #	Site Name	Component	Cultural Affiliation/Period and Site Type	NRHP Status
8	18AN1416	Shebanga 1	Multi-Component	19th century domestic site, possible prehistoric component	Unevaluated
8	18AN1417	Shebanga 2	Historic	19th century domestic site	Unevaluated
8	18AN1426	Mayo Beach	Historic	Late 19th-Early 20th century trash pit	Unevaluated
8	18AN1431	Sellman 1	Multi-Component	Late 18th and 19th century trash dump; Late Woodland short-term camp	Unevaluated
8	18AN1432	Sellman 2	Historic	18th and 19th century domestic artifact scatter	Unevaluated
8	18AN1433	Sellman 3	Multi-Component	19th century domestic artifact concentration; Prehistoric lithic scatter	Unevaluated
8	18AN1434	Sellman 4	Multi-Component	18th century domestic artifact concentration; Late Woodland isolated projectile point	Unevaluated
8	18AN1435	Sellman 5	Multi-Component	18th century artifact concentration; Middle Archaic isolated find	Unevaluated
8	18AN1436	Shaw's Folly	Historic	17th century plantation	Unevaluated
8	18AN1456	Fleeting Shell Midden	Prehistoric	Shell midden, probably prehistoric	Unevaluated
8	18AN1515	SI2013B	Prehistoric	Late Woodland shell midden	Unevaluated
8	18AN1529	Ford's Cellar	Historic	Late 17th-Early 18th Century House Site; Prehistoric unknown	Unevaluated
8	18AN1546	Sellman Farm Tenant House	Historic	Late 19th-early 20th century tenant house	Unevaluated
8	18AN1578	Collinson Cemetery	Historic	19th century family cemetery	Unevaluated
8	18AN1579	Glebe Heights Domestic	Historic	Mid 19th century house site, possible slave quarter	Unevaluated
8	18AN1602	Birch Manor Site A	Historic	Mid-19th century standing frame house and oyster shell midden	Unevaluated
8	18AN163	Old 96 Farm	Prehistoric	Middle Woodland shell midden	Unevaluated
8	18AN1650	Tarnans Branch	Prehistoric	Early Woodland short-term camp	Unevaluated
8	18AN1663	Doctor Green's Office	Historic	Mid 19th to early 20th century domestic artifact scatter	Unevaluated
8	18AN18	Ivy Neck	Prehistoric	Adena crematory, Archaic and Middle Woodland lithics	Unevaluated
8	18AN219	West Shore	Prehistoric	Middle Woodland shell midden; Late Archaic and Early & Late Woodland short-term components	Unevaluated
8	18AN225	Contee's Wharf	Multi-Component	Middle & Late Archaic and Early to Late Woodland camp/shell midden, late 18th century house, 19th/20th wharf	Unevaluated
8	18AN226	Sheepshead Cove North	Prehistoric	Woodland shell midden	Unevaluated
8	18AN227	Tucker	Historic	early 18th century house or plantation site	Unevaluated
8	18AN280	Sellman Creek #2	Prehistoric	shell deposits	Unevaluated
8	18AN281	Sellman Creek #1	Prehistoric	prehistoric lithic scatter and oyster midden	Unevaluated
8	18AN282	Sheepshead Cove South	Prehistoric	Middle Woodland (Selby Bay Phase) shell midden, also Early and Late Woodland components	Unevaluated
8	18AN283	Contee South	Prehistoric	Possibly Middle Woodland short-term camp	Unevaluated
8	18AN284	Smithsonian Pier	Prehistoric	Middle to Late Woodland shell midden	Eligible
8	18AN285	Smithsonian Pier West	Prehistoric	Middle Woodland - Late Woodland shell midden	Eligible

# CULTURAL RESOURCES TECHNICAL REPORT

Corridor	Site #	Site Name	Component	Cultural Affiliation/Period and Site Type	NRHP Status
8	18AN302	Big Island East	Prehistoric	prehistoric lithic scatter	Unevaluated
8	18AN303	High Island	Prehistoric	Middle & Late Woodland shell midden	Unevaluated
8	18AN339	Contee	Multi-Component	Late 18th century plantation house ruin; Prehistoric lithic scatter	Unevaluated
8	18AN379	W-T, AD 5	Prehistoric	shell midden	Unevaluated
8	18AN380	W-T, AD 6	Prehistoric	Late Woodland Shell Midden	Unevaluated
8	18AN381	W-T, AD 7	Prehistoric	shell midden	Unevaluated
8	18AN39	Saunders Point	Historic	mid-18th century cellar or storage feature	Unevaluated
8	18AN424	W-T, AA-A 5	Multi-Component	prehistoric lithic scatter, Late 18th to Mid 19th century house and ferry landing	Unevaluated
8	18AN425	W-T, AA-A 10	Prehistoric	prehistoric lithic scatter, oyster shell concentration	Unevaluated
8	18AN45	Doepkins	Prehistoric	prehistoric artifact scatter - possibly Adena	Unevaluated
8	18AN450	Aisquith Farm I	Multi-Component	Late Archaic and Early & Middle Woodland shell midden; 19th century artifact scatter	Unevaluated
8	18AN451	Aisquith Farm II	Multi-Component	Middle Woodland shell midden, historic artifacts	Unevaluated
8	18AN452	Aisquith Farm III	Multi-Component	Middle Woodland shell midden, possible Middle Archaic scatter, historic artifact concentration	Unevaluated
8	18AN453	Carr Farm	Multi-Component	Early Woodland lithic scatter, 19th century artifact scatter	Unevaluated
8	18AN454	Old Cox Farm	Prehistoric	Late Archaic and Early & Middle Woodland lithic scatter, tool manufacturing area	Ineligible
8	18AN46	Dove	Historic	mid-17th - 18th century plantation	Unevaluated
8	18AN462	Glebe Bay III	Historic	historic shell midden	Unevaluated
8	18AN475	Selby Bay IV	Prehistoric	shell midden	Unevaluated
8	18AN476	Pooles Gut	Prehistoric	shell midden	Unevaluated
8	18AN477	West Shoreham	Prehistoric	shell midden	Unevaluated
8	18AN536	Riva Road	Multi-Component	Archaic lithic scatter, 19th-20th century artifact scatter	Unevaluated
8	18AN537	Angle Point	Historic	19th century artifact concentration	Unevaluated
8	18AN538	Pindell Road	Historic	19th century artifact scatter	Unevaluated
8	18AN552	Pond	Prehistoric	prehistoric short-term resource procurement	Unevaluated
8	18AN571	Gresham	Historic	late 18th - 20th century standing structure, plantation	Listed
8	18AN571A	Gresham Tract Site # 1	Historic	early 19th century building ruin - brick floor	Unevaluated
8	18AN571B	Gresham Tract Site # 2	Historic	late 18th - 19th century artifact and brick scatter, possible structure	Unevaluated
8	18AN571C	Gresham Tract Site # 3	Historic	18th - 19th century artifact and brick scatter, possible structure	Unevaluated
8	18AN574	Collinson Farm	Historic	19th - 20th century farmstead including a slave/free black tenant cabin	Unevaluated
8	18AN589	Gresham Tract Site #1	Prehistoric	Late Woodland isolated find	Unevaluated
8	18AN590	Gresham Tract Site #2	Prehistoric	prehistoric lithic scatter	Unevaluated

# CULTURAL RESOURCES TECHNICAL REPORT

Corridor	Site #	Site Name	Component	Cultural Affiliation/Period and Site Type	NRHP Status
8	18AN595	Neck House Slave Quarters	Historic	19th - 20th century standing slave quarter / tenant house	Unevaluated
8	18AN60	Sillman Branch	Prehistoric	Archaic and Woodland lithic scatter	Unevaluated
8	18AN607	Christopher Hoover	Historic	19th century standing farmhouse	Unevaluated
8	18AN612	None	Prehistoric	Archaic base camp, short-term resource procurement	Unevaluated
8	18AN626	Rose	Historic	18th-early 19th century house site	Unevaluated
8	18AN720	Aisquith Farm J	Multi-Component	Middle Woodland shell midden, mid-19th century artifact scatter, midden	Unevaluated
8	18AN738	Contee's Wharf 2	Multi-Component	Late 18th-early 20th century wharf/landing, prehistoric shell midden and pits	Unevaluated
8	18AN807	Site #1	Historic	late 19th-early 20th century possible structure, artifact concentration	Unevaluated
8	18AN808	Site #2	Historic	historic log "corduroy" road and stream ford	Unevaluated
8	18AN809	Site #3 Mount Steuart	Historic	19th - 20th century plantation house	Unevaluated
8	18AN810	Site #4	Historic	19th - 20th century redeposited artifact concentration	Unevaluated
8	18AN811	Site #5	Historic	late 18th - early 19th century artifact concentration, possible structure	Unevaluated
8	18AN812	Site #6	Historic	late 19th - 20th century artifact concentration, possible structure	Unevaluated
8	18AN813	Site #7	Historic	18th century artifact concentration	Unevaluated
8	18AN842	Locust Point	Prehistoric	prehistoric submerged lithic scatter	Unevaluated
8	18AN864	Canning House Cove I	Multi-Component	late 19th-early 20th century wharf/landing, shell midden	Unevaluated
8	18AN865	Canning House Cove II	Multi-Component	early 20th century wharf/landing, shell midden	Unevaluated
8	18AN915	BC-1	Prehistoric	Woodland short-term resource procurement, lithic scatter	Unevaluated
8	18AN916	BC-2	Prehistoric	prehistoric lithic scatter	Unevaluated
8	18AN917	BC-3	Historic	historic shell midden	Unevaluated
8	18AN918	BC-4	Prehistoric	prehistoric lithic scatter	Unevaluated
8	18AN919	BC-5	Historic	historic possible structure	Unevaluated
8	18AN920	BC-6	Historic	historic masonry ruin	Unevaluated
8	18AN921	BC-7	Prehistoric	shell midden	Unevaluated
8	18AN922	South River Parcel A	Historic	late 18th-early 20th century farmstead	Unevaluated
8	18AN936	Tuckers Spring	Prehistoric	Late Woodland/Contact possible village, Archaic lithic scatter	Unevaluated
8	18AN937	Locust Farm	Prehistoric	Archaic short-term camp	Unevaluated
8	18AN952	Carr's Wharf Road	Multi-Component	18th century house site, possible prehistoric lithic & shell scatter, unknown	Unevaluated
8	18AN966	Sheephead Cove Site 1	Historic	Early 18th century frame cottage; late 19th century oyster shell midden	Unevaluated
8	18AN967	Sheephead Cove Site 2	Historic	18th century wharf/landing and oyster shell midden	Unevaluated
8	18QU1028	Eastern Bay Entrance Wreck	Historic	Shipwreck	Unevaluated
8	18QU1030	Bloody Point Bar Wreck	Historic	shipwreck	Unevaluated

# CULTURAL RESOURCES TECHNICAL REPORT

Corridor	Site #	Site Name	Component	Cultural Affiliation/Period and Site Type	NRHP Status
8	18TA115	W-T, TW 3	Prehistoric	prehistoric lithic scatter	Unevaluated
8	18TA14	Hambleton Creek	Prehistoric	Early & Late Archaic and Middle & Late Woodland and Adena base camp, shell midden	Unevaluated
8	18TA254	Martingham Creek	Prehistoric	Middle-Late Woodland shell midden, lithic scatter	Unevaluated
8	18TA255	Martingham Field Site #2	Prehistoric	Late Archaic, Middle-Late Woodland cobble reduction area, lithic scatter	Unevaluated
8	18TA278	Woodland Creek #1	Prehistoric	prehistoric shell midden	Unevaluated
8	18TA279	Woodland Creek #2	Prehistoric	prehistoric shell midden, submerged prehistoric	Unevaluated
8	18TA280	Woodland Creek #3	Prehistoric	prehistoric shell midden	Unevaluated
8	18TA281	Woodland Creek #4	Multi-Component	Prehistoric & 18th century shell midden	Unevaluated
8	18TA282	Woodland Creek #5	Multi-Component	prehistoric shell midden and historic artifact scatter	Unevaluated
8	18TA283	Woodland Creek #6	Prehistoric	prehistoric shell midden	Unevaluated
8	18TA284	Woodland Creek #7	Prehistoric	prehistoric shell midden, possible village or base camp	Unevaluated
8	18TA310	Hambleton's Headwaters	Prehistoric	Middle Woodland short-term camp	Unevaluated
8	18TA355	Pleasant Valley Farm	Multi-Component	Mid 17th-Early 18th & Early 18th-Late 18th cen house sites; Standing Late 18th cen farmstead; E Archaic camp	Unevaluated
8	18TA363	Dagney Farm #1	Prehistoric	prehistoric shell midden	Unevaluated
8	18TA401	South Wades Point	Prehistoric	Early Archaic through Late Woodland short-term camp	Unevaluated
8	18TA404	Martingham Habitation Site #1	Prehistoric	Terminal Archaic shell midden	Unevaluated
8	18TA405	Martingham Habitation Site #2	Prehistoric	Early & Late Archaic short-term camps; Middle Woodland possible base camp or village	Unevaluated
8	18TA417	SH 1	Prehistoric	Late Archaic/Terminal Archaic short-term camps	Unevaluated
8	18TA418	SH 2	Prehistoric	Prehistoric lithic scatter	Unevaluated
8	18TA419	SH 3	Prehistoric	Prehistoric lithic scatter	Ineligible
8	18TA420	SH 4	Multi-Component	Late Archaic & Late Woodland short-term camp; Late 18th-19th century artifact scatter	Ineligible
8	18TA421	SH 5	Prehistoric	Early Woodland short-term camp	Ineligible
8	18TA422	SH 6	Prehistoric	Middle or Late Archaic lithic scatter	Ineligible
8	18TA423	SH 7	Prehistoric	Prehistoric lithic scatter	Ineligible
8	18TA424	SH 8	Multi-Component	Late Archaic Base Camp, Early Archaic & Middle Woodland short-term camp, Late 18th-19th century artifact scatter	Eligible
8	18TA425	SH 9	Multi-Component	Prehistoric short-term camps or quarry; Early to mid-18th century house sites	Eligible
8	18TA426	SH 10	Prehistoric	Early Archaic lithic scatter	Unevaluated
8	18TA427	SH 11	Multi-Component	Prehistoric lithic scatter; 18th century possible house site, 19th century artifact scatter	Ineligible
8	18TA428	SH 12	Historic	Mid (Possibly Early?) 19th century frame house with Late 19th century Victorian frame addition, demolished	Ineligible

# CULTURAL RESOURCES TECHNICAL REPORT

Corridor	Site #	Site Name	Component	Cultural Affiliation/Period and Site Type	NRHP Status
8	18TA56	W-T, TM-1	Prehistoric	prehistoric short-term resource procurement	Unevaluated
8	18TA6	Timber Neck	Multi-Component	Archaic short-term resource procurement, historic ceramics	Unevaluated
8	18TA8	Hambleton Point	Prehistoric	Middle Woodland short-term resource procurement	Unevaluated
8	18TA9	Greenfield	Multi-Component	lithic scatter, possibly Archaic, late 18th century unknown	Unevaluated
8	ANNAPO-QF10	N/A	Prehistoric	Archaic points dredged off 3 Sisters oyster bar; transcribed from MHT confidential quad map, 18 November 1981.	Unevaluated
8	BOWIE-QF04	N/A	Historic	Mill, dam, and race reported by Tom Mayr.	Unevaluated
8	BOWIE-QF04	N/A	Historic	Mill, dam, and race reported by Tom Mayr.	Unevaluated
8	BOWIE-QF12	N/A	Historic	Probable extension (or actual location) of the Watkins Slave Cemetery (18AN1204), mapped to the east. Cadaver dogs alerted in three spots in this area. See map	Unevaluated
8	CLABRN-QF06	N/A	Historic	Approximate location of Claiborne waterfront; per information gathered during Phase IA Underwater Archeological Project (AC) ca. 1990 by Bastian and Shomette, per historic maps. See historic map of Claiborne in Quad File folder.	Unevaluated
8	CLABRN-QF07	N/A	Historic	Approximate location of steamboat wharf at Claiborne; per information gathered during Phase IA Underwater Archeological Project (R) ca. 1990 by Bastian and Shomette, per historic maps.	Unevaluated
8	CLABRN-QF08	N/A	Historic	Approximate location of shipyard at Claiborne; per information gathered during Phase IA Underwater Archeological Project ca. 1990 by Bastian and Shomette, per historic maps. See historic map of Claiborne in Quad File folder.	Unevaluated
8	CLABRN-QF09	N/A	Historic	Approximate location of oyster house at Claiborne; per information gathered during Phase IA Underwater Archeological Project ca. 1990 by Bastian and Shomette, per historic maps. See historic map of Claiborne in Quad File folder.	Unevaluated
8	CLABRN-QF10	N/A	Historic	Approximate location of wharf across Tilghman Creek from Claiborne; per information gathered during Phase IA Underwater Archeological Project ca. 1990 by Bastian and Shomette, per historic maps. See historic map of Claiborne in Quad File folder.	Unevaluated
8	CLABRN-QF11	N/A	Historic	Approximate location of wharf at Claiborne; per information gathered during Phase IA Underwater Archeological Project ca. 1990 by Bastian and Shomette, per historic maps. See historic map of Claiborne in Quad File folder.	Unevaluated

# CULTURAL RESOURCES TECHNICAL REPORT

Corridor	Site #	Site Name	Component	Cultural Affiliation/Period and Site Type	NRHP Status
8	CLABRN-QF12	N/A	Historic	Approximate location of wharf complex near Claiborne (one wharf about 400 yards long and one railroad wharf about 200 yards long); per information gathered during Phase IA Underwater Archeological Project (AC)	Unevaluated
8	CLABRN-QF13	N/A	Historic	Approximate location of pier near Parkers Creek; per information gathered during Phase IA Underwater Archeological Project (AV) ca. 1990 by Bastian and Shomette, per historic maps.	Unevaluated
8	DEALE-QF05	N/A	Prehistoric	Arrowheads ("Archaic") dredged off 3 sisters Oyster Bar at 5 foot contour, Bronco of Princess [clammer named Bronko Gukanovich??]; transcribed from MHT confidential quad map, 24 November 1981.	Unevaluated
8	DEALE-QF10	N/A	Historic	Approximate location of Steiners Wharf; per information gathered during Phase IA Underwater Archeological Project (N) ca. 1990 by Bastian and Shomette, per historic maps.	Unevaluated
8	HORSHO-QF01	N/A	Prehistoric	Arrowheads ("Archaic") dredged off 3 sisters Oyster Bar at 5 foot contour, Bronco of Princess [clammer named Bronko Gukanovich??].	Unevaluated
8	SOUTHR-QF10	N/A	Prehistoric	Tom Mayr's site #51, 3 gorgets found in field east of house.	Unevaluated
8	SOUTHR-QF17	N/A	Historic	Approximate location of Carrs Wharf, per information gathered during Phase IA Underwater Archeological Project (AH) ca. 1990 by Bastian and Shomette, per historic maps.	Unevaluated
8	SOUTHR-QF25	N/A	Prehistoric	Arrowheads ("Archaic") dredged off 3 sisters Oyster Bar at 5 foot contour, Bronco of Princess [clammer named Bronko Gukanovich??].	Unevaluated
8	SOUTHR-QF26	N/A	Historic	Remnants of a wooden wharf cribbing with brick and stone fill. 25m long, 25m wide, 10m out from the shoreline. MMAP survey by Thompson 1992. Diver tested in 10/1993.	Unevaluated
8	SOUTHR-QF27	N/A	Prehistoric	Points and flakes reported in 1997 by Richard Riley Johnson. Quartz, rhyolite, and jasper. See MHT # AN 601, p. 11.	Unevaluated
8	STMICH-QF01	N/A	Unknown	Shell middens per Seth Willis 9 March 1971.	Unevaluated
8	STMICH-QF02	N/A	Prehistoric	Dr. Mocovary Farm. Points found here by tenant per Larry Mullikin 29 November 1974.	Unevaluated
8	STMICH-QF09	N/A	Historic	Approximate location of wharf on Leeds Creek near Tunis Mills, per information gathered during Phase IA Underwater Archeological Project (A) ca. 1990 by Bastian and Shomette, per historic maps.	Unevaluated

# CULTURAL RESOURCES TECHNICAL REPORT

Corridor	Site #	Site Name	Component	Cultural Affiliation/Period and Site Type	NRHP Status
8	STMICH-QF10	N/A	Historic	Approximate location of Oakland Mills waterfront, per information gathered during Phase IA Underwater Archeological Project (AM) ca. 1990 by Bastian and Shomette, per historic maps.	Unevaluated
8	STMICH-QF11	N/A	Historic	Approximate location of steamboat wharf, per information gathered during Phase IA Underwater Archeological Project ca. 1990 by Bastian and Shomette, per historic maps. (See historic map of Oakland Mills in Quad File folder.)	Unevaluated
8	STMICH-QF12	N/A	Historic	Approximate location of lumber wharf, per information gathered during Phase IA Underwater Archeological Project ca. 1990 by Bastian and Shomette, per historic maps. (See historic map of Oakland Mills in Quad File folder.)	Unevaluated
8	STMICH-QF13	N/A	Historic	Approximate location of wood wharf, per information gathered during Phase IA Underwater Archeological Project ca. 1990 by Bastian and Shomette, per historic maps. (See historic map of Oakland Mills in Quad File folder.)	Unevaluated
8	STMICH-QF23	N/A	Prehistoric	All of Martingham Field was collected by Norman K. Brady and Steve Henckel. Late Archaic and Early, Middle & Late Woodland artifacts catalogued by Lowery in 1998. See Site form and catalog sheets in the St. Michaels Quad File folder.	Unevaluated

## Appendix I. NOAA Shipwreck Data



# CULTURAL RESOURCES TECHNICAL REPORT

Report Wreck #	Corridor	Source	AWOIS #	Latitude	Longitude	DEPTH (Feet)	AWOIS History
1	6	NOAA AWOIS	10811	39.094981	-76.296386	25	H10859/99-- OPR-E346-BH; UNCHARTED DANGEROUS SUBMERGED WRECK LOCATED BY SIDE SCAN SONAR. MULTIBEAM LD OF 25 FEET IN LAT. 39-05-41.93N, LONG. 76-17-46.99W. EVALUATOR RECOMMENDS CHARTING A 25 WK AS SURVEYED. (ENT 11/29/00, SJV)
2	6	NOAA AWOIS	9396	39.098611	-76.420556	0	CL1696/72-- USPS; CHARTED VISIBLE WRECK NOT VISIBLE. SCALED FROM CHART 12282 IN APPROX. LAT. 39-05-55N, LONG. 76-25-14W. (ENT 4/11/95, SJV). H10622/95-- OPR-E346-AHP; NUMEROUS CRAB POTS IN AREA PREVENTED CHAIN DRAG OPS. ECHO SOUNDER SEARCH NEGATIVE. EVALUATOR RECOMMENDS RETAINING AS CHARTED. (UP 3/20/97,SJV)
3	6	NOAA ENC	N/A	39.094965	-76.296385	N/A	N/A
4	6	NOAA ENC	N/A	39.123434	-76.479577	N/A	N/A
5	6	NOAA ENC	N/A	39.098664	-76.420627	N/A	N/A
6	6	NOAA ENC	N/A	39.098335	-76.441656	N/A	N/A
7	7	NOAA AWOIS	9739	38.995944	-76.391900	0	LNM34/72-- CHESAPEAKE BAY - CHESAPEAKE CHANNEL - WRECK INFORMATION; A 44-FOOT CABIN CRUISER HAS BEEN REPORTED SUNK IN 36 FEET OF WATER IN THE VICINITY OF THE CHESAPEAKE BAY BRIDGE IN APPROX. POSITION LAT. 38-59-45N, LONG. 76-23-32W. (ENT 4/24/96, SJV). H10691/96-- OPR-E346-AHP; LOCATED BY SIDE SCAN SONAR. SMALL SONAR SHADOW. ES DEVELOPMENT INDICATED OBJECT FLUSH WITH BOTTOM. EVALUATOR RECOMMENDS DELETING. (UP 12/10/04, SJV)
8	7	NOAA AWOIS	9400	39.016667	-76.388333	0	LNM18/89-- ADD SYMBOL FOR SUBMERGED DANGEROUS WRECK IN APPROX. POSITION LAT. 39-01-00N, LONG. 76-23-18W. (ENT 4/11/95, SJV)
9	7	NOAA ENC	N/A	38.978309	-76.248073	N/A	N/A
10	7	NOAA ENC	N/A	38.972874	-76.232788	N/A	N/A
11	7	NOAA ENC	N/A	38.965790	-76.241272	N/A	N/A
12	7	NOAA ENC	N/A	38.961668	-76.225104	N/A	N/A
13	7	NOAA ENC	N/A	38.962607	-76.232812	N/A	N/A
14	7	NOAA ENC	N/A	38.970293	-76.249097	N/A	N/A
15	7	NOAA ENC	N/A	38.990848	-76.360330	N/A	N/A
16	7	NOAA ENC	N/A	39.012205	-76.439721	N/A	N/A
17	7	NOAA ENC	N/A	38.990104	-76.399150	N/A	N/A
18	7	NOAA ENC	N/A	39.001632	-76.406663	N/A	N/A

# CULTURAL RESOURCES TECHNICAL REPORT

19	7	NOAA ENC	N/A	39.008293	-76.396638	N/A	N/A
20	7	NOAA ENC	N/A	38.987471	-76.380590	N/A	N/A
21	8	NOAA AWOIS	10006	38.809364	-76.379133	40	CL1680/97-- DANGER TO NAVIGATION LETTER DATED 12/10/97 FROM AHP (ILLG) TO CGD5. WHILE CONDUCTING A HYDROGRAPHIC SURVEY IN THE UPPER CHESAPEAKE BAY (OPR-E346-AHP) AN UNCHARTED WRECK WAS LOCATED IN LAT. 38-48-33.71N, LONG. 76-22-44.88W. ECHO SOUNDER DEPTH OF 40 FEET AT MLLW (PREDICTED TIDES). LNM51/97-- ADD WRECK WITH 40-FOOT DEPTH IN LAT. 38-48-33.70N, LONG. 76-22-44.90W. (ENT 2/26/98, SJV). H10752/98-- OPR-E346-BH; 200% SIDE SCAN SONAR SEARCH AND ECHO SOUNDER SEARCH WITH 10-METER LINE SPACING. WRECK LOCATED IN LAT. 38-48-33.71N, LONG. 76-48-33.71W, ECHO SOUNDER LD OF 11.4 METERS (37 FEET). EVALUATOR RECOMMENDS REVISING CHARTED DANGEROUS SUNKEN WRECK 40 FT (REP 1997) TO 37 FEET AND DELETING (REP 1997). EXTENDS 3.2 METERS OFF THE BOTTOM. FURTHER WORK AND DIVE OPS RECOMMENDED. (UP 10/14/98, SJV)
22	8	NOAA AWOIS	10160	38.823447	-76.366339	0	LNM18/80-- CHESAPEAKE BAY-EASTERN BAY-WRECK BUOY TEMPORARILY ESTABLISHED; WRECK BUOY 1 (LLP 420) A BLACK CAN IN 8 FEET OF WATER MARKING THE REMAINS OF A 45-FOOT CABIN CRUISER HAS BEEN TEMPORARILY ESTABLISHED IN APPROX. POSITION LAT. 38-49.4N, LONG. 76-22.0W. LNM26/82-- WRECK BUOY 1 HAS BEEN DISCONTINUED. (ENT 12/14/98, SJV)
23	8	NOAA AWOIS	7431	38.828533	-76.394722	70	CL977/49-USCG--THE SS OREMAR REP. STRIKING A SUBM. OBJECT IN LAT.37-39-30N, LONG.76-09-30W. THE DRAFT OF THE SS OREMAR IS APPROX. 34.5 FEET. (ENTERED, 11/22/83, MJF). FE79(FE NO.5 1949)-- USC&GS SHIPS PARKER, BOWEN & STIRNI; 3PT SEXTANT FIXES AND SHORAN CONTROL; THE OBJECT WAS HUNG AND CLEARED TO 38FT IN LAT.37-40-28.8N, LONG.76-10-24.6W. THERE WAS ALSO A FATHOMETER TRACE RECORDED BUT NO DIVER INVEST. IT IS PRESENTLY CHARTED AS AN OBSTR. WITH 38FT WIRE DRAG SNDG. (CHART 12225, 40TH ED). (ENTERED, 11/22/83, MJF). FE220(20-1-79)--OPR-E609-RU/HE-79; ITEM 2; SIDE SCAN SONAR AND ECHOGRAMS INDICATE A PROTRUSION 12.5FT OFF THE BOTTOM LYING IN A N/NW POS. WITH SCOURING ON ONE SIDE. AN ARGO. D.P. WAS OBTAINED IN LAT.37-40-27.0N, LONG.76-10-22.2W. NO WIRE DRAG OPERATIONS WERE PERFORMED. (ENTERED, 11/22/83, MJF). FE220/79--OPR-E609-RU/HE-79; ITEM 2; SUBM DANG WK LOCATED BY HYDRO. EVALUATOR RECOMMENDS ITEM BE CHARTED AS SUBM DANG WK WITH THE CLEARANCE DEPTH OF 38FT OBTAINED BY FE-79WD IN LAT 37-40-27.05N, LONG 76-10-22.03W. SHOALEST SOUNDING BY ECHO SOUNDER OF 52FT (UNCORRECTED). NO LEAST DEPTH OBTAINED. (UPDATE 3/89 LQ). DESCRIPTION **** TELECON WITH N/MOA 2321 (M. HICKSON, 827-6268) ON 11/8/83, REVEALED THAT THIS ITEM WAS FOUND TO BE

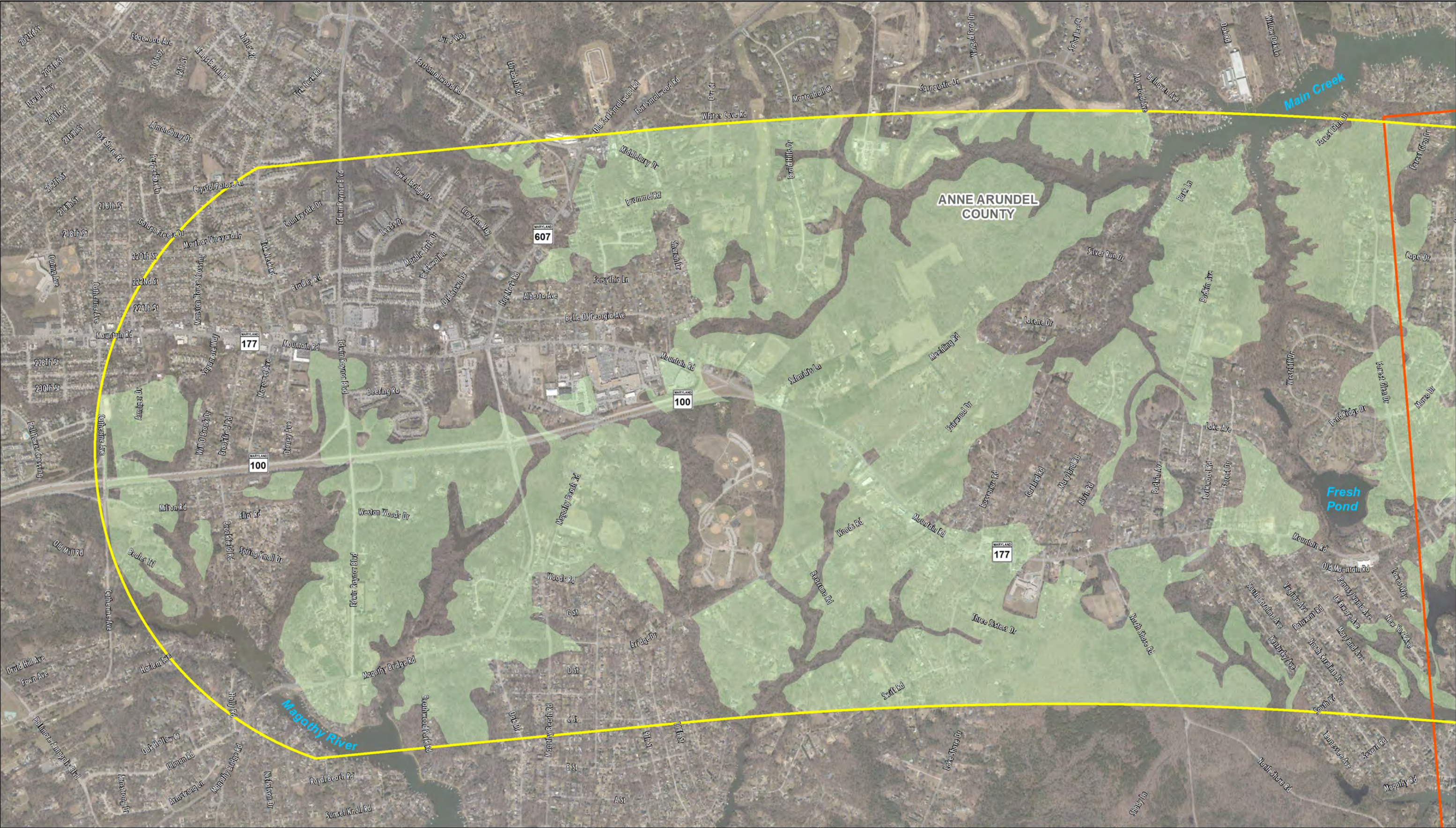
# CULTURAL RESOURCES TECHNICAL REPORT

							INCOMPLETE PRIOR TO VERIFICATION PROCESSING. IT WAS RECOMMENDED THAT IT BE REASSIGNED FOR FULL INVESTIGATION. (ENTERED, 11/22/83, MJF).
24	8	NOAA AWOIS	7432	38.865708	-76.436750	28	FE305SS/87-- OPR-E609-RU/HE-87; UNCHARTED WRECK LOCATED WHILE SEARCHING FOR AWOIS ITEM 4460 IN LAT. 38-51-56.55N, LONG. 76-26-12.30W. DESCRIBED AS A CABIN CRUISER 23 FEET LONG, LYING UPRIGHT IN 36 FEET. HOME PORT OF CAPE ST. CLAIRE, MD STENCILED ON STERN AND 1983 MARYLAND REG. NO. 2786 AA ON BOW. EXTENDS APPROX. 7 FEET OFF BOTTOM. LD OF 28 FEET AT MLLW (PNEUMATIC DEPTH GAUGE). EVALUATOR RECOMMENDS CHARTING A DANGEROUS SUNKEN WRECK WITH LD OF 28 FEET AS SURVEYED. NO ADDITIONAL FIELD WORK RECOMMENDED. LORAN-C RATES (9960 CHAIN); W=16114.7, X=27578.1, Y=42623.6, Z=58931.0. (ENT 5/24/89, SJV). H10691/96-- OPR-E346-AHP; LOCATED BY 200% SIDE SCAN SONAR SEARCH. ECHO SOUNDER LD 2 FEET DEEPER THAN DIVER LD. EVALUATOR RECOMMENDS CHARTING A 28 WK (DELETE NOTE "28 FT 1987") IN LAT. 38-51-56.55N, LONG. 76-26-12.30W. (UP 3/31/98, SJV)
25	8	NOAA ENC	N/A	38.865806	-76.436423	N/A	N/A
26	8	NOAA ENC	N/A	38.877413	-76.522831	N/A	N/A
27	8	NOAA ENC	N/A	38.808459	-76.316378	N/A	N/A
28	8	NOAA ENC	N/A	38.834086	-76.370781	N/A	N/A
29	8	NOAA ENC	N/A	38.828542	-76.394681	N/A	N/A
30	8	NOAA ENC	N/A	38.809402	-76.379096	N/A	N/A
31	8	NOAA ENC	N/A	38.863143	-76.482338	N/A	N/A
32	8	NOAA ENC	N/A	38.888424	-76.484563	N/A	N/A
33	8	NOAA ENC	N/A	38.861994	-76.478955	N/A	N/A
34	8	NOAA ENC	N/A	38.881509	-76.481985	N/A	N/A
35	8	NOAA ENC	N/A	38.823426	-76.366129	N/A	N/A
36	8	NOAA ENC	N/A	38.872795	-76.513958	N/A	N/A
37	8	NOAA ENC	N/A	38.889302	-76.524888	N/A	N/A
38	8	NOAA ENC	N/A	38.838750	-76.268452	N/A	N/A


---

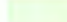
**Appendix J. Corridor 6 Map of Areas that May Require Additional Archaeological Survey**







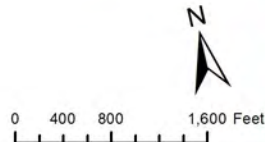
**Legend**

 CARA Corridor

 Areas that May Require Additional Terrestrial Archaeological Testing

 Municipal Boundaries

 County Boundaries



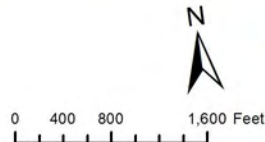
CHESAPEAKE  
**BAY CROSSING STUDY**  
TIER 1 NEPA  
Areas that May Require Archaeological Survey  
**Corridor 6**  
Page 1 of 6





**Legend**

	CARA Corridor		Areas that May Require Additional Terrestrial Archaeological Testing
	Municipal Boundaries		
	County Boundaries		



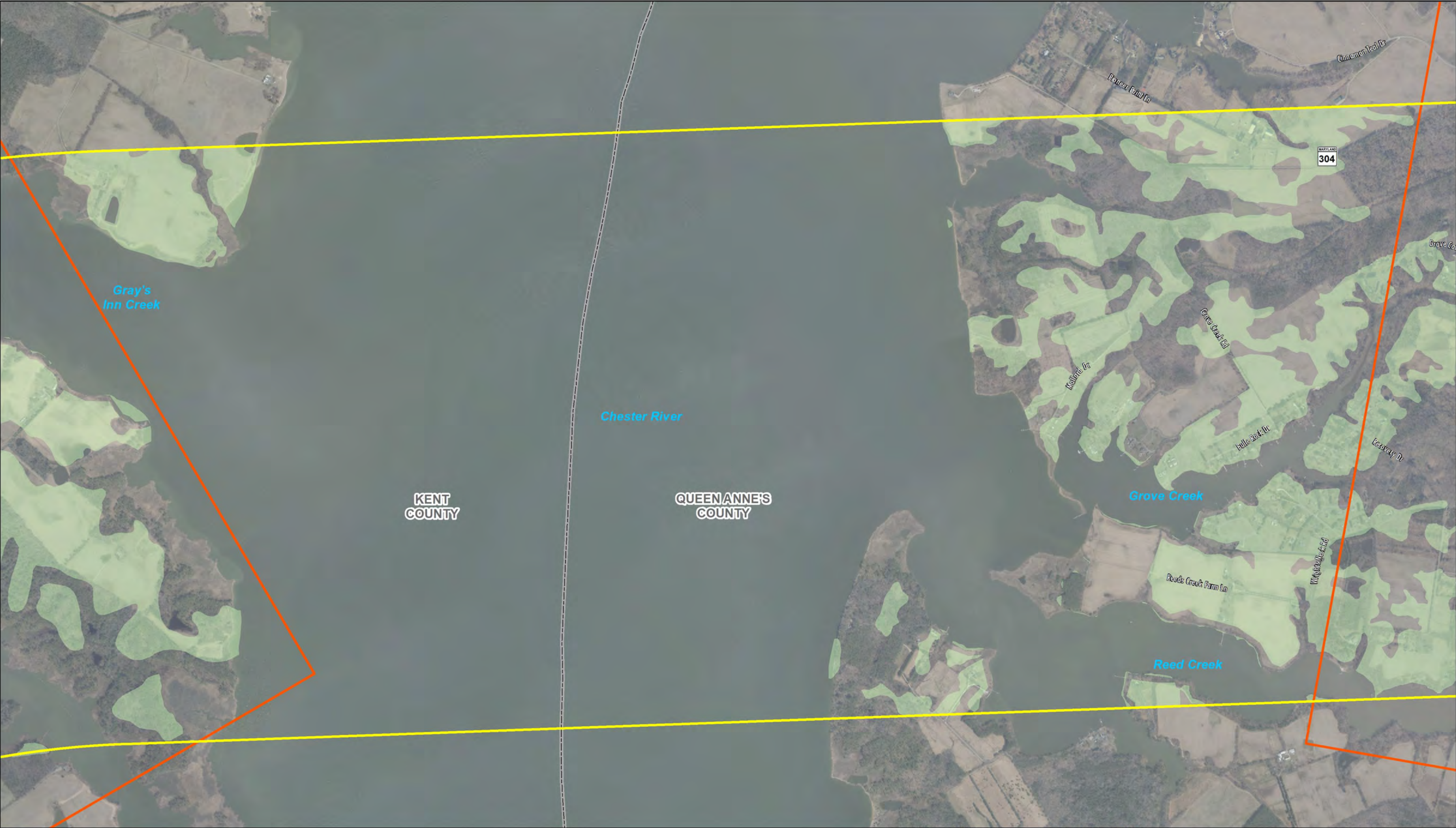
















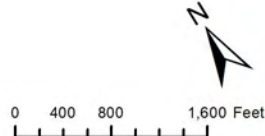
**Legend**

 CARA Corridor

 Areas that May Require Additional Terrestrial Archaeological Testing

 Municipal Boundaries

 County Boundaries









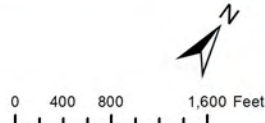
## Appendix K. Corridor 7 Map of Areas that May Require Additional Archaeological Survey





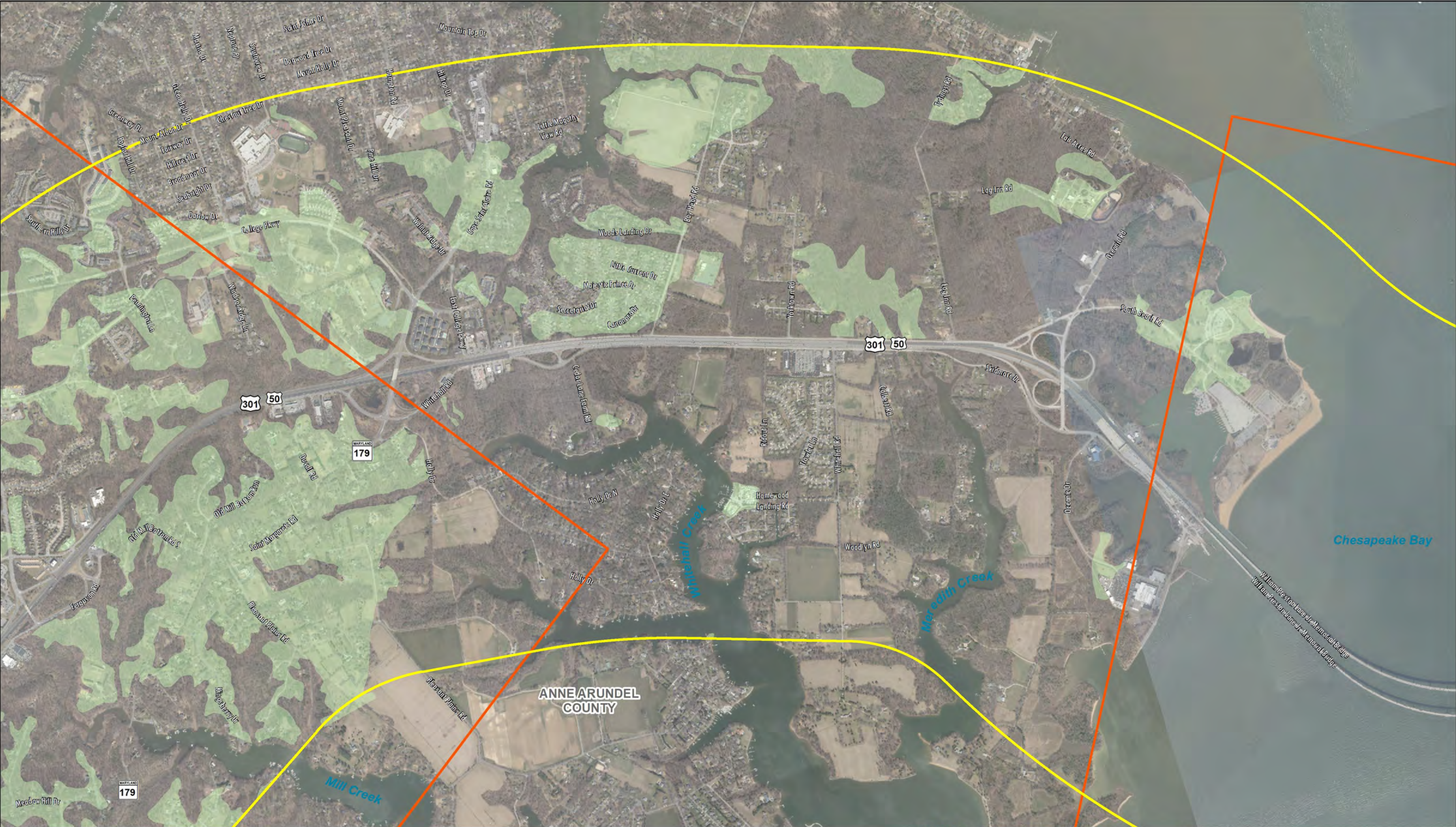
**Legend**

- CARA Corridor
- Areas that May Require Additional Terrestrial Archaeological Testing
- Municipal Boundaries
- County Boundaries



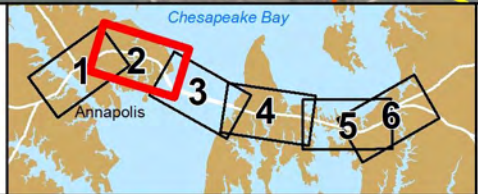
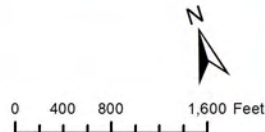
CHESAPEAKE  
**BAY CROSSING STUDY**  
TIER 1 NEPA  
Areas that May Require Archaeological Survey  
**Corridor 7**  
Page 1 of 6





**Legend**

- CARA Corridor
- Municipal Boundaries
- County Boundaries
- Areas that May Require Additional Terrestrial Archaeological Testing







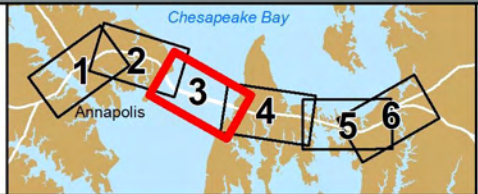
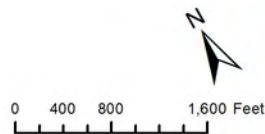
**Legend**

 CARA Corridor

 Municipal Boundaries

 County Boundaries

 Areas that May Require Additional Terrestrial Archaeological Testing



**CHESAPEAKE  
BAY CROSSING STUDY**  
TIER 1 NEPA  
Areas that May Require Archaeological Survey  
**Corridor 7**  
Page 3 of 6



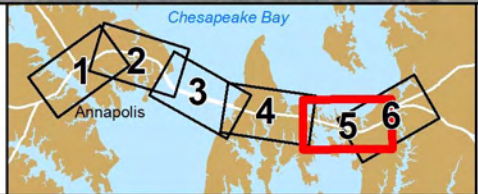
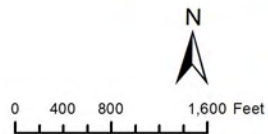






**Legend**

- CARA Corridor
- Areas that May Require Additional Terrestrial Archaeological Testing
- Municipal Boundaries
- County Boundaries







**Legend**

- CARA Corridor
- Areas that May Require Additional Terrestrial Archaeological Testing
- Municipal Boundaries
- County Boundaries





## Appendix L. Corridor 8 Map of Areas that May Require Additional Archaeological Survey



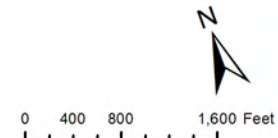






**Legend**


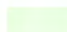

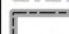
- CARA Corridor
- Areas that May Require Additional Terrestrial Archaeological Testing
- Municipal Boundaries
- County Boundaries

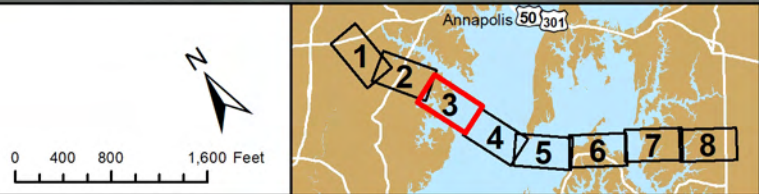








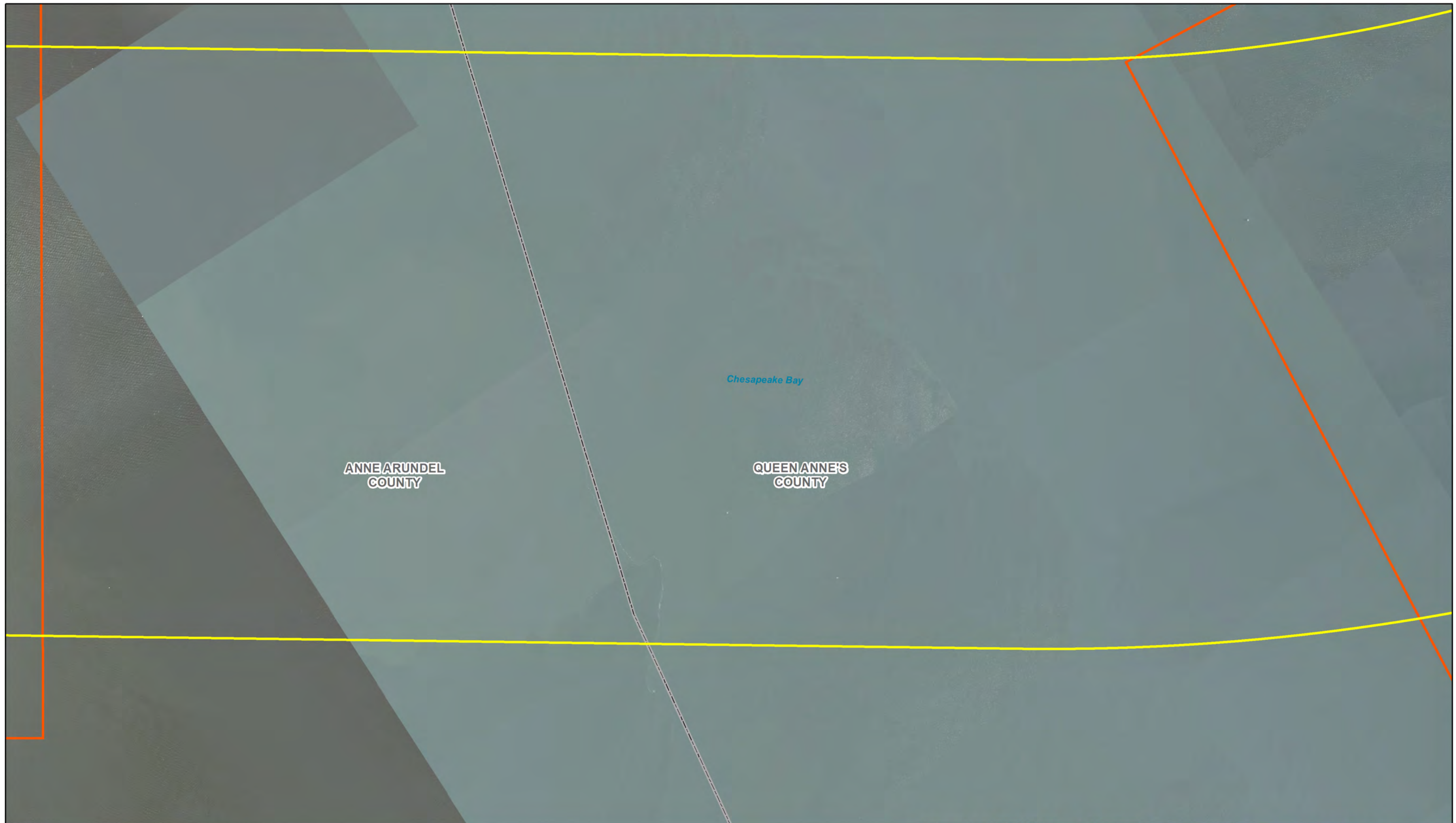
**Legend**

	CARA Corridor		Areas that May Require Additional Terrestrial Archaeological Testing
	Municipal Boundaries		
	County Boundaries		



 Federal Highway Administration	 MDTA Maryland Transportation Authority
<p><b>CHESAPEAKE BAY CROSSING STUDY</b> — TIER 1 NEPA — Areas that May Require Archaeological Survey <b>Corridor 8</b> Page 3 of 8</p>	









**Legend**

- CARA Corridor
- Areas that May Require Additional Terrestrial Archaeological Testing
- Municipal Boundaries
- County Boundaries

0 400 800 1,600 Feet

N

Federal Highway Administration

MDTA Maryland Transportation Authority

CHESAPEAKE  
BAY CROSSING STUDY  
TIER 1 NEPA

Areas that May Require Archaeological Survey

**Corridor 8**

Page 5 of 8





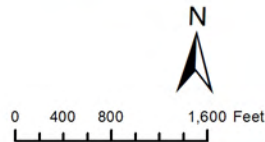
**Legend**

CARA Corridor

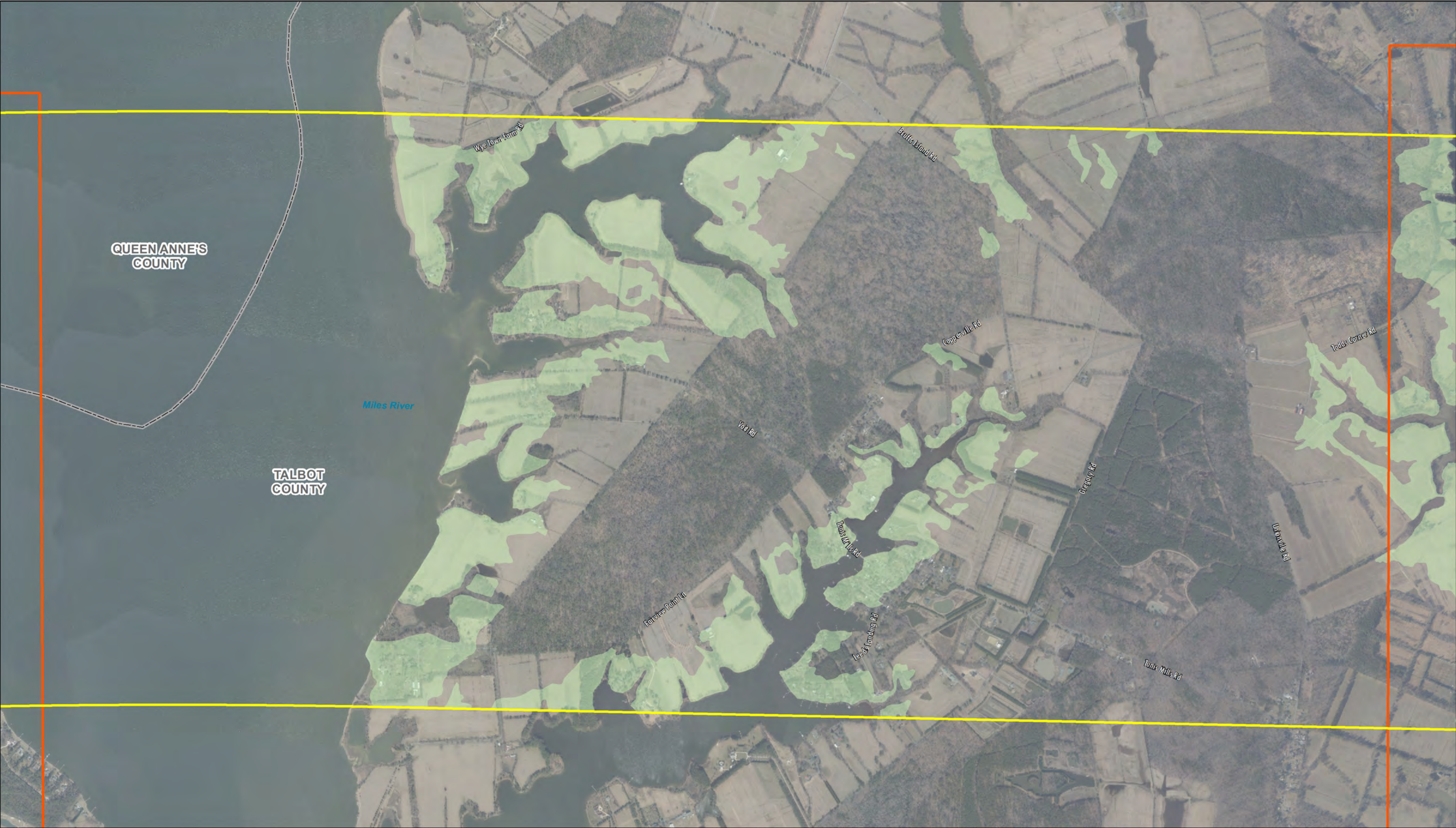
Areas that May Require Additional Terrestrial Archaeological Testing

Municipal Boundaries


County Boundaries

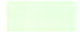








**Legend**

 C&D Canal Corridor

 Areas that May Require Additional Terrestrial Archaeological Testing

 Municipal Boundaries

 County Boundaries

